

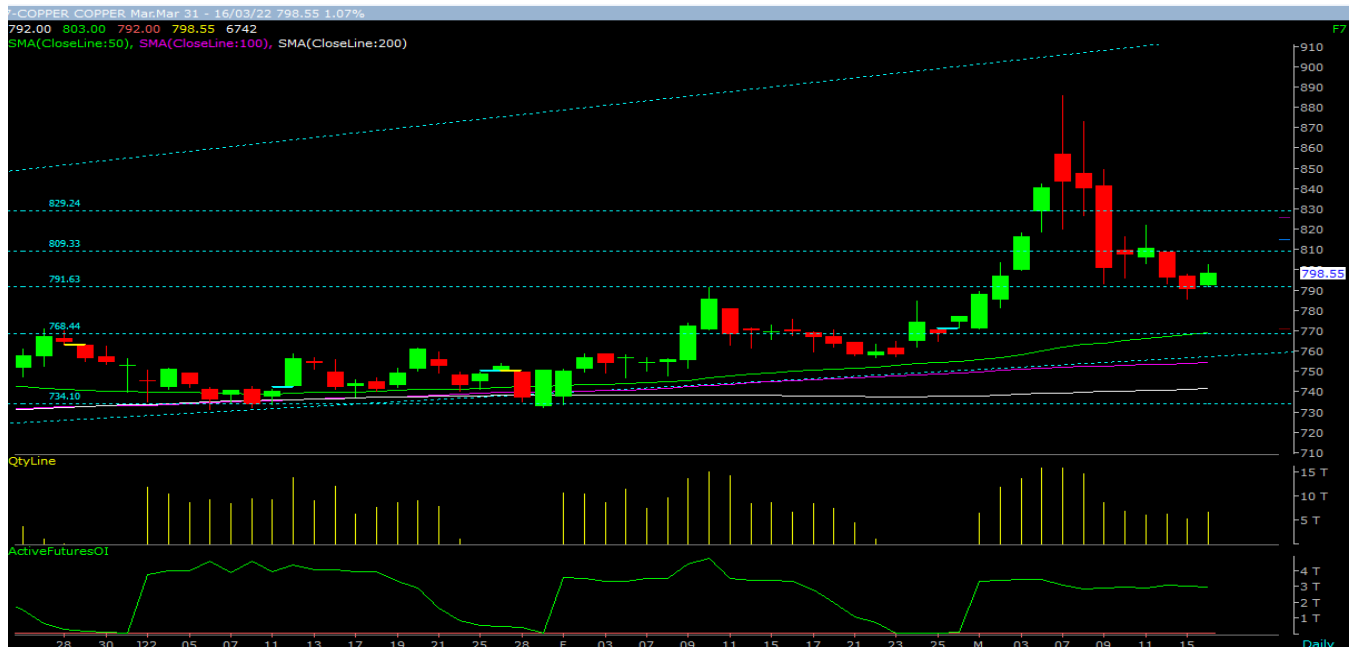
## COMMODITY OUTLOOK

### Daily Commodity Market Updates

#### News in headlines:

- Oil futures open higher on IEA supply warning
- Oil Edges Higher After Three-Day Slide as Volatility Continues
- U.S. appeals court restores Biden climate risk measure for now

#### Chart of the day:



COPPER: COPPER after witnessing the sharp selling pressure now consolidating the range of 790-810 where move above 810 further upside move toward 815-817 levels, on the downside 790 is an immediate support level below this 782-775 will be the next support levels.

#### Technical View:

- Bullion: Day trend is indicating downtrend in Gold & Silver.
- Energy: Day trend is indicating downtrend in Crude oil & sideways in Natural gas.
- Base metals: Day trend in base metal is indicating sideways to downtrend.

### Pivot levels for MCX Bullion:

COMMODITY	R3	R2	R1	PP	S1	S2	S3	DAY TREND
GOLD	51926	51722	51435	51231	50944	50740	50453	DOWNTREND
SILVER	69043	68621	67962	67540	66881	66459	65800	DOWNTREND
MCXBULLDEX	15286	15222	15127	15063	14968	14904	14809	DOWNTREND

### Pivot levels for MCX Energy:

COMMODITY	R3	R2	R1	PP	S1	S2	S3	TREND
CRUDEOIL	7877	7723	7510	7356	7143	6989	6776	DOWNTREND
NATURALGAS	376.97	370.13	365.97	359.13	354.97	348.13	343.97	DOWNTREND
MCXENRGDEX	7664	7597	7516	7449	7368	7301	7220	DOWNTREND

### Pivot levels for MCX Metals:

COMMODITY	R3	R2	R1	PP	S1	S2	S3	TREND
ALUMINIUM	278.02	274.58	269.47	266.03	260.92	257.48	252.37	DOWNTREND
NICKEL	3183	3077	2897	2791	2612	2506	2326	DOWNTREND
ZINC	327.52	324.03	320.47	316.98	313.42	309.93	306.37	DOWNTREND
COPPER	815	809	804	798	793	787	782	DOWNTREND
LEAD	184.10	183.45	183.00	182.35	181.90	181.25	180.80	DOWNTREND
METLDEX	24197	23674	23130	22607	22063	21540	20996	DOWNTREND

### Important Data Today:

- **Unemployment Claims (USD)(Time:06.00pm)**
- **Industrial Production m/m (USD)(Time:06.45pm)**
- **Natural Gas Storage (USD)(Time:08.00pm)**

### DISCLAIMER:

Disclaimer: This document is solely for the personal information of the intended recipient and must not be exceptionally used as the basis for any investment decision. Nothing in this document should be construed as investment, Legal, taxation or financial advice. Swastika Investmart Ltd. is not soliciting any action based upon it. Each recipient of this document should make necessary investigations as they consider important to arrive at an independent evaluation of an investment in the securities of the companies referred to in this document (including the merits and risks involved). This report has been made based on information that we consider reliable and are publicly available but we do not state that it is accurate or complete and it should not be solely relied upon such, as this document is for.

Swastika Investmart Limited, its affiliates, directors, its proprietary trading and investment businesses may, from time to time, make investment decisions that are inconsistent with or contradictory to the recommendations expressed herein. The views contained in this document are those of the analyst, and the company may or may not subscribe to all the views expressed within this document.

Swastika Investmart Limited or any of its affiliates/ group companies, or employees shall not be in any way held responsible for any loss or damage that may arise to any person from any inadvertent error in the information contained in this report.

**CORPORATE & ADMINISTRATIVE OFFICE** - 48, Jaora Compound, M.Y.H. Road, Indore - 452 001 | Phone 0731 - 6644000 / 3345000

**Compliance Officer:** Ms. Sheetal Duraphe Email: [compliance@swastika.co.in](mailto:compliance@swastika.co.in) Phone: (0731) 6644 241

**Swastika Investmart Limited**, SEBI Regn. No. : NSE - INB/F/E 231129736, BSE - INB/F 011129732, MSEI - INE 261129736, INB/F 261129739, NSDL & CDSL - IN-DP-115-2015, NCDEX & MCX : INZ000072532, Investment Advisor Regn. No. - INA000009843.