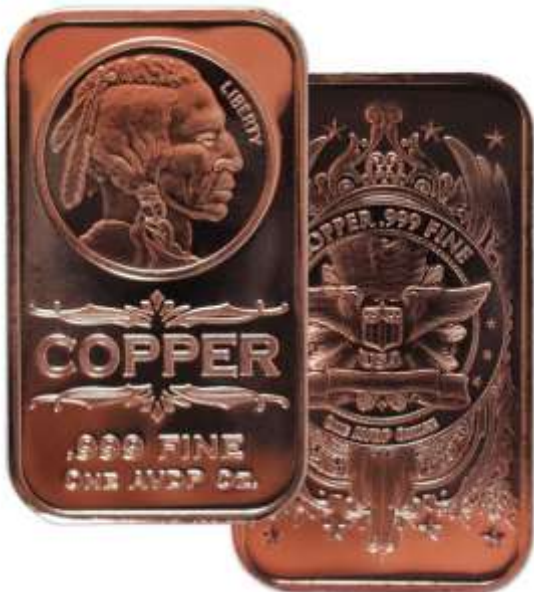


COPPER

27/10/2021



Technical outlook

Copper Nov future daily chart has formed "Right angled ascending broadening wedge" pattern. There were few sideways rallies within the channel in the last few sessions, while the market has traded lower and closed in red for the last session. The market is expected to continue on bearish momentum based on the current price action, once the same break below the current key support holding near 761. The downside rally could be testing all the way up to 758-755 levels in the upcoming sessions. Alternatively, if the market

struggles to break the support level, then it might revise the trend to bullish/sideways mode. Key resistance holds at 770.

Technical Chart

