



# BULLION

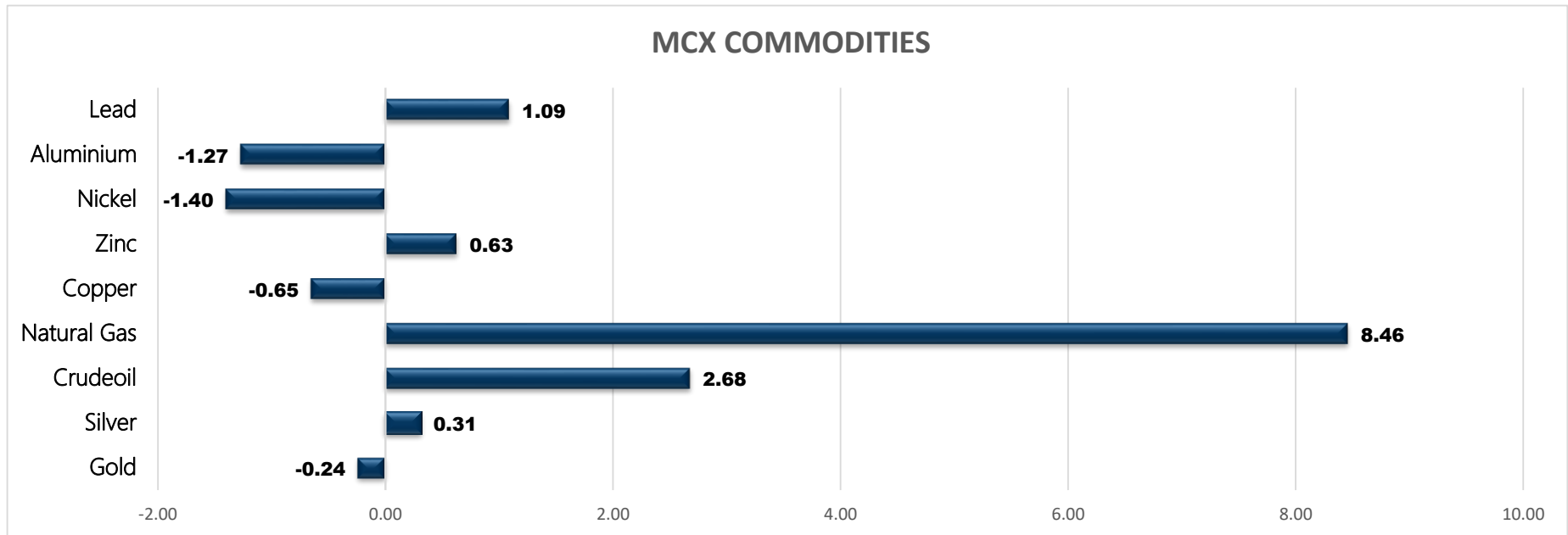
- Gold
- Silver

| Commodity   | Closed   | % Change |
|-------------|----------|----------|
| Gold        | 50018.00 | -0.24    |
| Silver      | 56986.00 | 0.31     |
| Crudeoil    | 7114.00  | 2.68     |
| Natural Gas | 710.50   | 8.46     |
| Copper      | 648.65   | -0.65    |
| Zinc        | 286.95   | 0.63     |
| Nickel      | 1930.00  | -1.40    |
| Aluminium   | 198.50   | -1.27    |
| Lead        | 180.55   | 1.09     |

| Commodity     | Ltp*     | % Change |
|---------------|----------|----------|
| Gold\$        | 1694.42  | -0.03    |
| Silver\$      | 19.56    | -0.68    |
| Crudeoil\$    | 88.48    | 1.34     |
| Natural Gas\$ | 9.11     | 10.02    |
| Lme Copper    | 7850.00  | 0.83     |
| Lme Zinc      | 3269.50  | 0.85     |
| Lme Nickel    | 24415.00 | 0.00     |
| Lme Lead      | 1961.50  | -0.15    |
| Lme Aluminium | 2311.00  | 1.49     |

| Economical Data |                                  |
|-----------------|----------------------------------|
| EUR             | German WPI m/m                   |
| EUR             | French Final CPI m/m             |
| GBP             | Consumer Inflation Expectations  |
| EUR             | Trade Balance                    |
| USD             | Core Retail Sales m/m            |
| USD             | Empire State Manufacturing Index |
| USD             | Retail Sales m/m                 |
| USD             | Philly Fed Manufacturing Index   |
| USD             | Unemployment Claims              |

MCX COMMODITIES



MCX MARKET SYNOPSIS

| Contract | Open     | High     | Low      | Close    | Rs Chg  | % Chg | Volume | OI   | OI % Chg |
|----------|----------|----------|----------|----------|---------|-------|--------|------|----------|
| Gold Oct | 50069.00 | 50148.00 | 50000.00 | 50018.00 | -120.00 | -0.24 | 5420   | 9874 | -0.08    |
| Gold Dec | 50357.00 | 50420.00 | 50252.00 | 50268.00 | -153.00 | -0.30 | 1002   | 8680 | 2.02     |

| Contract   | Open     | High     | Low      | Close    | Rs Chg | % Chg | Volume | OI    | OI % Chg |
|------------|----------|----------|----------|----------|--------|-------|--------|-------|----------|
| Silver Dec | 56475.00 | 57235.00 | 56314.00 | 56986.00 | 175.00 | 0.31  | 15519  | 17986 | -2.42    |
| Silver Mar | 57375.00 | 58201.00 | 57322.00 | 57949.00 | 169.00 | 0.29  | 393    | 432   | 7.46     |

MCX PIVOT

| Contract   | Sup - 3  | Sup - 2  | Sup - 1  | Pivot    | Res - 1  | Res - 2  | Res - 3  | OI Status        |
|------------|----------|----------|----------|----------|----------|----------|----------|------------------|
| Gold Oct   | 49814.00 | 49907.00 | 49962.00 | 50055.00 | 50110.00 | 50203.00 | 50258.00 | Long Liquidation |
| Silver Dec | 55534.00 | 55924.00 | 56455.00 | 56845.00 | 57376.00 | 57766.00 | 58297.00 | Short Covering   |

SPREAD SYNOPSIS

| Gold  |       |     |        |        | Silver |       |     |        |         | Spread History |         |        |        |
|-------|-------|-----|--------|--------|--------|-------|-----|--------|---------|----------------|---------|--------|--------|
| Month | Rate  | Oct | Dec    | Feb    | Month  | Rate  | Dec | Mar    | May     | Commodity      | Max     | Min    | Avg    |
| Oct   | 50018 |     | 250.00 | 495.00 | Dec    | 56986 |     | 963.00 | 1652.00 | Gold           | 665.00  | -13.00 | 199.00 |
| Dec   | 50268 |     |        | 245.00 | Mar    | 57949 |     |        | 689.00  | Silver         | 1131.00 | 469.00 | 757.00 |
| Feb   | 50513 |     |        |        | May    | 58638 |     |        |         |                |         |        |        |

INTERNATIONAL MARKET SYNOPSIS

| Gold Last 4 Day Movement |         |         |         |         |        |        |  | Pivot   |         |         |
|--------------------------|---------|---------|---------|---------|--------|--------|--|---------|---------|---------|
| Date                     | Open    | High    | Low     | Close   | Chg    | % Chg  |  | Res - 1 | Res - 2 | Res - 3 |
| 14-Sep-22                | 1701.95 | 1706.06 | 1693.56 | 1696.80 | -5.20  | -0.31% |  | 1704.05 | 1711.31 | 1716.55 |
| 13-Sep-22                | 1724.37 | 1730.76 | 1697.92 | 1702.00 | -22.43 | -1.30% |  | Sup - 1 | Sup - 2 | Sup - 3 |
| 12-Sep-22                | 1716.89 | 1733.96 | 1711.95 | 1724.43 | 7.59   | 0.44%  |  | 1691.55 | 1686.31 | 1679.05 |
| 9-Sep-22                 | 1708.26 | 1728.45 | 1706.52 | 1716.84 | 8.53   | 0.50%  |  |         |         |         |

| Silver Last 4 Day Movement |        |        |        |        |        |        |  | Pivot   |         |         |
|----------------------------|--------|--------|--------|--------|--------|--------|--|---------|---------|---------|
| Date                       | Open   | High   | Low    | Close  | Chg    | % Chg  |  | Res - 1 | Res - 2 | Res - 3 |
| 14-Sep-22                  | 19.336 | 19.681 | 19.249 | 19.620 | 0.283  | 1.46%  |  | 19.78   | 19.95   | 20.22   |
| 13-Sep-22                  | 19.788 | 19.917 | 19.338 | 19.338 | -0.450 | -2.27% |  | Sup - 1 | Sup - 2 | Sup - 3 |
| 12-Sep-22                  | 18.836 | 19.967 | 18.836 | 19.788 | 0.952  | 5.05%  |  | 19.35   | 19.09   | 18.92   |
| 9-Sep-22                   | 18.531 | 18.928 | 18.520 | 18.836 | 0.305  | 1.65%  |  |         |         |         |

GOLD

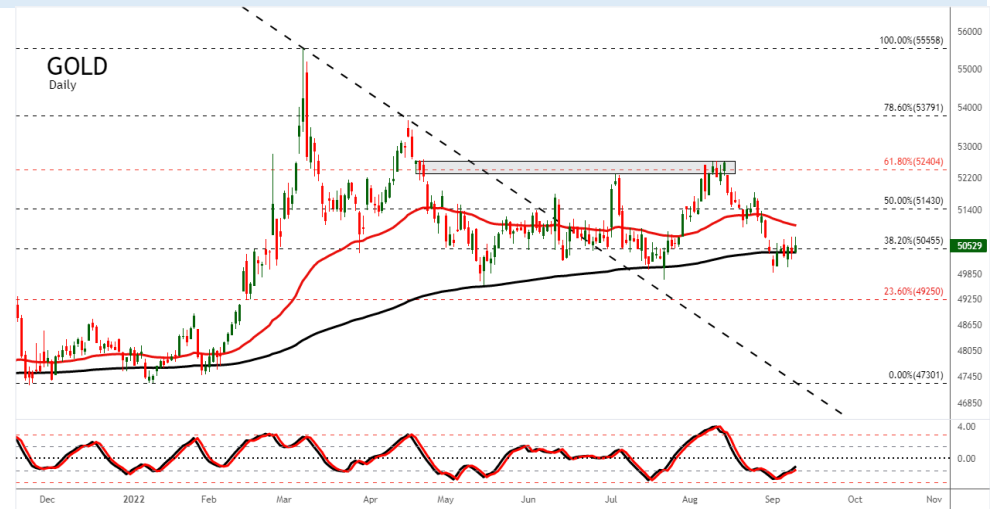
Gold trading range for the day is 49907-50203.

Gold remained in range weighed down by a sharp dollar rally after higher-than-expected US inflation numbers

US consumer prices unexpectedly rose 0.1% in August from a month ago

US annual rate eased less than expected to 8.3%

In India, dealers were charging a premium of up to \$1 an ounce over official domestic prices down from last week's \$2 premium.



SILVER

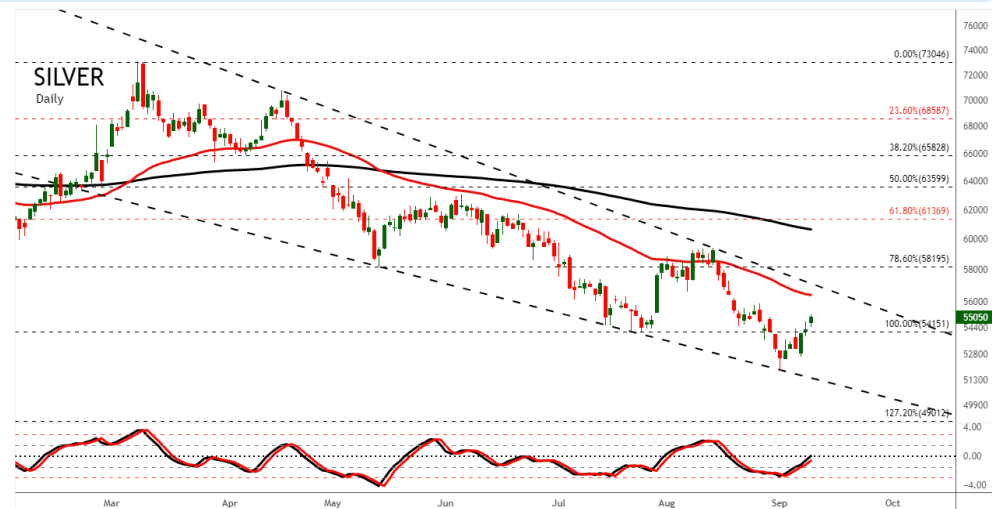
Silver trading range for the day is 55924-57766.

Silver prices were at \$19.5 per ounce, holding below the near four-week high of \$19.8 hit September 12

The two-year U.S. Treasury yield scaled a new 15-year high

Markets have fully priced in an interest rate hike of at least 75 basis points, talk of a 100-bps lift-off are now back on the table.

The ECB must raise interest rates further to prevent record euro-zone inflation from spilling over into wages



BULLION SPOT MARKET SYNOPSIS

| Gold Spot 995 |                      |          |
|---------------|----------------------|----------|
| Exch.         | Descr.               | Ltp*     |
| CMDTY         | Gold 995 - Ahmedabad | 51795.00 |
| CMDTY         | Gold 995 - Bangalore | 51575.00 |
| CMDTY         | Gold 995 - Chennai   | 51790.00 |
| CMDTY         | Gold 995 - Cochin    | 51795.00 |
| CMDTY         | Gold 995 - Delhi     | 51725.00 |
| CMDTY         | Gold 995 - Hyderabad | 51760.00 |
| CMDTY         | Gold 995 - Jaipur    | 51600.00 |
| CMDTY         | Gold 995 - Kolkata   | 51625.00 |
| CMDTY         | Gold 995 - Mumbai    | 51595.00 |

\* Rates including GST

| Gold Spot 999 |                      |          |
|---------------|----------------------|----------|
| Exch.         | Descr.               | Ltp*     |
| CMDTY         | Gold 999 - Ahmedabad | 51925.00 |
| CMDTY         | Gold 999 - Bangalore | 51725.00 |
| CMDTY         | Gold 999 - Chennai   | 51940.00 |
| CMDTY         | Gold 999 - Cochin    | 51945.00 |
| CMDTY         | Gold 999 - Delhi     | 51875.00 |
| CMDTY         | Gold 999 - Hyderabad | 51750.00 |
| CMDTY         | Gold 999 - Jaipur    | 51750.00 |
| CMDTY         | Gold 999 - Mumbai    | 51745.00 |

\* Rates including GST

| Silver Spot 999 |                        |          |
|-----------------|------------------------|----------|
| Exch.           | Descr.                 | Ltp*     |
| CMDTY           | Silver 999 - Ahmedabad | 58205.00 |
| CMDTY           | Silver 999 - Bangalore | 58395.00 |
| CMDTY           | Silver 999 - Chennai   | 58255.00 |
| CMDTY           | Silver 999 - Delhi     | 58435.00 |
| CMDTY           | Silver 999 - Hyderabad | 58250.00 |
| CMDTY           | Silver 999 - Jaipur    | 57995.00 |
| CMDTY           | Silver 999 - Kolkata   | 58765.00 |
| CMDTY           | Silver 999 - Mumbai    | 58065.00 |

\* Rates including GST

| Gold and Silver Fix |                    |         |
|---------------------|--------------------|---------|
| Exch.               | Descr.             | Ltp*    |
| CMDTY               | Gold London AM FIX | 1727.05 |
| CMDTY               | Gold London PM FIX | 1704.85 |
| CMDTY               | Silver London FIX  | 19.92   |

| Gold and Silver Ratio |                   |       |
|-----------------------|-------------------|-------|
| Exch.                 | Descr.            | Ltp*  |
| Intl Spot             | GOLD SILVER RATIO | 86.64 |
| MCX                   | GOLD SILVER RATIO | 87.77 |

| SPOT Vs MCX SPREAD     |         |                      |         |
|------------------------|---------|----------------------|---------|
| Silver 999             | Spread  | Gold 999             | Spread  |
| Ahmedabad - Mcx Silver | 1219.00 | Ahmedabad - Mcx Gold | 1907.00 |
| Bangalore - Mcx Silver | 1409.00 | Bangalore - Mcx Gold | 1707.00 |
| Chennai - Mcx Silver   | 1269.00 | Chennai - Mcx Gold   | 1922.00 |
| Delhi - Mcx Silver     | 1449.00 | Cochin - Mcx Gold    | 1927.00 |
| Hyderabad - Mcx Silver | 1264.00 | Delhi - Mcx Gold     | 1857.00 |
| Jaipur - Mcx Silver    | 1009.00 | Hyderabad - Mcx Gold | 1732.00 |
| Kolkata - Mcx Silver   | 1779.00 | Jaipur - Mcx Gold    | 1732.00 |
| Mumbai - Mcx Silver    | 1079.00 | Mumbai - Mcx Gold    | 1727.00 |

## GOLD PRICE MOVEMENT SINCE 2014

| Year    | JAN   | FEB   | MAR   | APR   | MAY   | JUN   | JUL   | AUG   | SEP   | OCT   | NOV   | DEC   | Growth   |
|---------|-------|-------|-------|-------|-------|-------|-------|-------|-------|-------|-------|-------|----------|
| 2014    | 29462 | 30090 | 28536 | 28887 | 26863 | 27776 | 27818 | 27996 | 26313 | 25881 | 25835 | 26703 | -1661.00 |
|         | 3.87  | 2.13  | -5.16 | 1.23  | -7.01 | 3.40  | 0.15  | 0.64  | -6.01 | -1.64 | -0.18 | 3.36  | -5.86    |
| 2015    | 27895 | 26477 | 26204 | 26716 | 26860 | 26471 | 24813 | 26682 | 25856 | 26499 | 25069 | 24931 | -1772.00 |
|         | 4.46  | -5.08 | -1.03 | 1.95  | 0.54  | -1.45 | -6.26 | 7.53  | -3.10 | 2.49  | -5.40 | -0.55 | -6.64    |
| 2016    | 26638 | 29513 | 28549 | 30266 | 28627 | 31199 | 31549 | 30724 | 30742 | 29950 | 28385 | 27445 | 2514.00  |
|         | 6.85  | 10.79 | -3.27 | 6.01  | -5.42 | 8.98  | 1.12  | -2.61 | 0.06  | -2.58 | -5.23 | -3.31 | 10.08    |
| 2017    | 28942 | 29566 | 28463 | 28873 | 28843 | 28439 | 28557 | 29745 | 29557 | 29253 | 29012 | 29000 | 1555.00  |
|         | 5.45  | 2.16  | -3.73 | 1.44  | -0.10 | -1.40 | 0.41  | 4.16  | -0.63 | -1.03 | -0.82 | -0.04 | 5.67     |
| 2018    | 30117 | 30379 | 30408 | 31036 | 30831 | 30432 | 29653 | 30129 | 30481 | 31748 | 30240 | 31392 | 2392.00  |
|         | 3.85  | 0.87  | 0.10  | 2.07  | -0.66 | -1.29 | -2.56 | 1.61  | 1.17  | 4.16  | -4.75 | 3.81  | 8.25     |
| 2019    | 33096 | 33286 | 31998 | 31756 | 32266 | 34206 | 35420 | 38805 | 37323 | 38578 | 38031 | 39208 | 7816.00  |
|         | 5.43  | 0.57  | -3.87 | -0.76 | 1.61  | 6.01  | 3.55  | 9.56  | -3.82 | 3.36  | -1.42 | 3.09  | 24.90    |
| 2020    | 41000 | 41397 | 43000 | 44906 | 46654 | 48762 | 53445 | 51701 | 50334 | 50699 | 47918 | 50151 | 10943.00 |
|         | 4.57  | 0.97  | 3.87  | 4.43  | 3.89  | 4.52  | 9.60  | -3.26 | -2.64 | 0.73  | -5.49 | 4.66  | 27.91    |
| 2021    | 49096 | 45736 | 44935 | 46737 | 49349 | 46839 | 48001 | 47120 | 46521 | 47635 | 47805 | 48099 | -2052.00 |
|         | -2.10 | -6.84 | -1.75 | 4.01  | 5.59  | -5.09 | 2.48  | -1.84 | -1.27 | 2.39  | 0.36  | 0.61  | -4.09    |
| 2022    | 47632 | 50760 | 52166 | 51754 | 50847 | 50517 | 51426 | 50414 |       |       |       |       | 2315.00  |
|         | -0.97 | 6.57  | 2.77  | -0.79 | -1.75 | -0.65 | 1.80  | -1.97 |       |       |       |       | 4.81     |
| Average | 3.49  | 1.35  | -1.34 | 2.18  | -0.37 | 1.45  | 1.14  | 1.53  | -2.03 | 0.98  | -2.86 | 1.45  | Average  |

## SILVER PRICE MOVEMENT SINCE 2014

| Year    | JAN   | FEB   | MAR    | APR   | MAY   | JUN   | JUL   | AUG   | SEP    | OCT   | NOV   | DEC   | Growth   |
|---------|-------|-------|--------|-------|-------|-------|-------|-------|--------|-------|-------|-------|----------|
| 2014    | 43309 | 46362 | 42805  | 41329 | 40851 | 44114 | 44399 | 42255 | 38516  | 35797 | 34527 | 35990 | -7843.00 |
|         | -1.20 | 7.05  | -7.67  | -3.45 | -1.16 | 7.99  | 0.65  | -4.83 | -8.85  | -7.06 | -3.55 | 4.24  | -17.89   |
| 2015    | 38105 | 36716 | 37169  | 36415 | 38349 | 35536 | 34025 | 34581 | 34547  | 36490 | 33480 | 33299 | -2691.00 |
|         | 5.88  | -3.65 | 1.23   | -2.03 | 5.31  | -7.34 | -4.25 | 1.63  | -0.10  | 5.62  | -8.25 | -0.54 | -7.48    |
| 2016    | 34750 | 36081 | 36751  | 41566 | 38400 | 43467 | 47480 | 43988 | 45726  | 42402 | 40089 | 39485 | 6186.00  |
|         | 4.36  | 3.83  | 1.86   | 13.10 | -7.62 | 13.20 | 9.23  | -7.35 | 3.95   | -7.27 | -5.45 | -1.51 | 18.58    |
| 2017    | 41921 | 43247 | 42326  | 39503 | 40096 | 38344 | 38645 | 39798 | 39457  | 38818 | 37532 | 39000 | -485.00  |
|         | 6.17  | 3.16  | -2.13  | -6.67 | 1.50  | -4.37 | 0.78  | 2.98  | -0.86  | -1.62 | -3.31 | 3.91  | -1.23    |
| 2018    | 39319 | 38246 | 38322  | 38642 | 39904 | 39228 | 38321 | 37482 | 38577  | 38050 | 36025 | 38821 | -179.00  |
|         | 0.82  | -2.73 | 0.20   | 0.84  | 3.27  | -1.69 | -2.31 | -2.19 | 2.92   | -1.37 | -5.32 | 7.76  | -0.46    |
| 2019    | 40439 | 39760 | 37761  | 37714 | 36449 | 37452 | 41227 | 46776 | 44119  | 46764 | 44506 | 46711 | 7890.00  |
|         | 4.17  | -1.68 | -5.03  | -0.12 | -3.35 | 2.75  | 10.08 | 13.46 | -5.68  | 6.00  | -4.83 | 4.95  | 20.32    |
| 2020    | 46989 | 43979 | 39520  | 41390 | 50118 | 50364 | 64984 | 70437 | 59919  | 60865 | 60222 | 68105 | 21394.00 |
|         | 0.60  | -6.41 | -10.14 | 4.73  | 21.09 | 0.49  | 29.03 | 8.39  | -14.93 | 1.58  | -1.06 | 13.09 | 45.80    |
| 2021    | 69706 | 67261 | 63814  | 68366 | 71898 | 69074 | 67847 | 63366 | 59617  | 64534 | 62287 | 62660 | -5445.00 |
|         | 2.35  | -3.51 | -5.12  | 7.13  | 5.17  | -3.93 | -1.78 | -6.60 | -5.92  | 8.25  | -3.48 | 0.60  | -8.00    |
| 2022    | 60976 | 65901 | 67487  | 64349 | 61125 | 58887 | 58370 | 53151 |        |       |       |       | -9509.00 |
|         | -2.69 | 8.08  | 2.41   | -4.65 | -5.01 | -3.66 | -0.88 | -8.94 |        |       |       |       | -15.18   |
| Average | 2.27  | 0.46  | -2.71  | 0.99  | 2.13  | 0.38  | 4.51  | -0.38 | -3.68  | 0.52  | -4.41 | 4.06  | Average  |

# GENERAL DISCLAIMERS

KEDIA ADVISORY

This Report is prepared and distributed by Kedia Stocks & Commodities Research Pvt Ltd. for information purposes only. The recommendations, if any, made herein are expression of views and/or opinions and should not be deemed or construed to be neither advice for the purpose of purchase or sale through KSCRPL nor any solicitation or offering of any investment /trading opportunity. These information / opinions / views are not meant to serve as a professional investment guide for the readers. No action is solicited based upon the information provided herein. Recipients of this Report should rely on information/data arising out of their own investigations. Readers are advised to seek independent professional advice and arrive at an informed trading/investment decision before executing any trades or making any investments. This Report has been prepared on the basis of publicly available information, internally developed data and other sources believed by KSCRPL to be reliable. KSCRPL or its directors, employees, affiliates or representatives do not assume any responsibility for, or warrant the accuracy, completeness, adequacy and reliability of such information / opinions / views. While due care has been taken to ensure that the disclosures and opinions given are fair and reasonable, none of the directors, employees, affiliates or representatives of KSCRPL shall be liable for any direct, indirect, special, incidental, consequential, punitive or exemplary damages, including lost profits arising in any way whatsoever from the information / opinions / views contained in this Report. The possession, circulation and/or distribution of this Report may be restricted or regulated in certain jurisdictions by appropriate laws. No action has been or will be taken by KSCRPL in any jurisdiction (other than India), where any action for such purpose(s) is required. Accordingly, this Report shall not be possessed, circulated and/ or distributed in any such country or jurisdiction unless such action is in compliance with all applicable laws and regulations of such country or jurisdiction. KSCRPL requires such recipient to inform himself about and to observe any restrictions at his own expense, without any liability to KSCRPL. Any dispute arising out of this Report shall be subject to the exclusive jurisdiction of the Courts in India.

For more details, please **contact:**

 +91 9323406035 / 9619551022

 [info@kediaadvisory.com](mailto:info@kediaadvisory.com)

 [www.kediaadvisory.com](http://www.kediaadvisory.com)

KEDIA STOCKS & COMMODITIES RESEARCH PVT LTD.  
Mumbai, IN.

SEBI REGISTRATION NUMBER - INH000006156

