

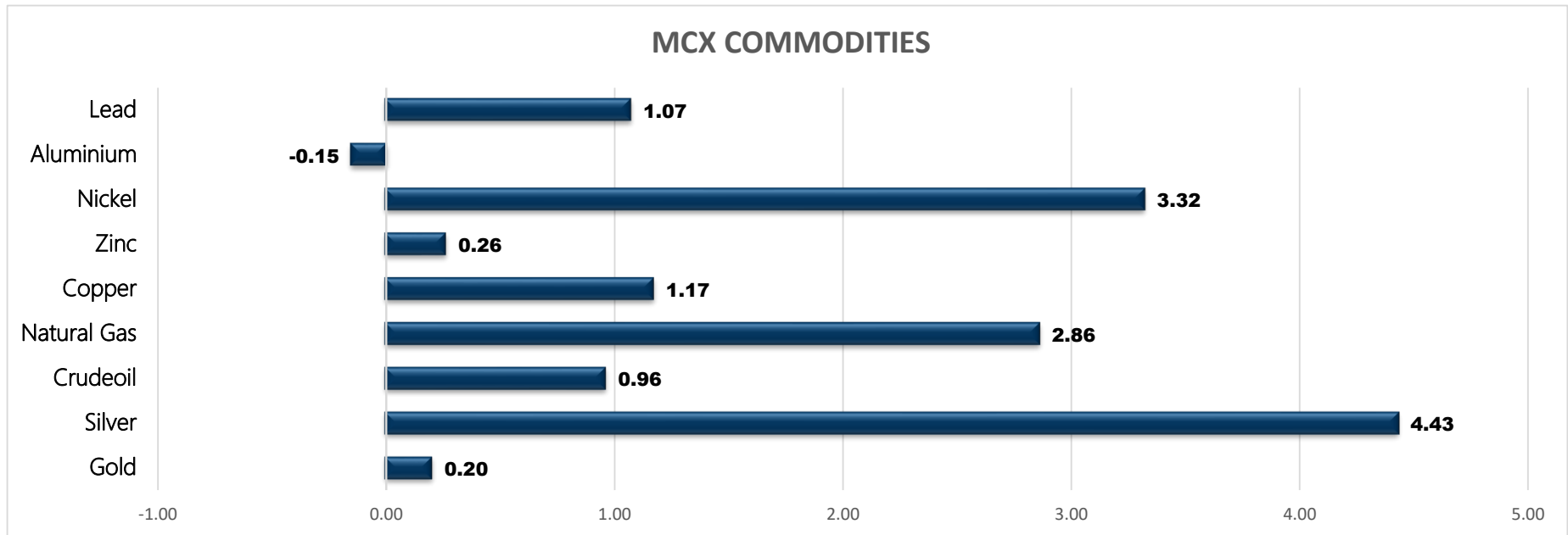


Energy

- Crude Oil
- Natural Gas

Commodity	Closed	% Change	Commodity	Ltp*	% Change	Economical Data
Gold	50631.00	0.20	Gold\$	1721.94	-0.10	EUR German Final CPI m/m
Silver	57491.00	4.43	Silver\$	19.64	-0.66	EUR Italian Quarterly Unemployment R:
Crudeoil	6975.00	0.96	Crudeoil\$	87.78	1.14	EUR ZEW Economic Sentiment
Natural Gas	657.20	2.86	Natural Gas\$	8.25	3.16	EUR German ZEW Economic Sentiment
Copper	662.75	1.17	Lme Copper	7976.50	-0.34	USD NFIB Small Business Index
Zinc	286.00	0.26	Lme Zinc	3236.00	0.84	EUR ECOFIN Meetings
Nickel	1930.00	3.32	Lme Nickel	24400.00	0.00	USD CPI m/m
Aluminium	199.95	-0.15	Lme Lead	1953.50	0.08	USD Core CPI m/m
Lead	179.35	1.07	Lme Aluminium	2304.50	0.52	USD IBD/TIPP Economic Optimism

MCX COMMODITIES



MCX MARKET SYNOPSIS

Contract	Open	High	Low	Close	Rs Chg	% Chg	Volume	OI	OI % Chg
Crude Oil Sep	6850.00	7074.00	6807.00	6975.00	66.00	0.96	51399	7115	-13.02
Crude Oil Oct	6805.00	7062.00	6805.00	6967.00	73.00	1.06	4618	1532	6.98
Crude Oil Nov	6780.00	7040.00	6780.00	6989.00	117.00	1.70	46	165	-10.33

Contract	Open	High	Low	Close	Rs Chg	% Chg	Volume	OI	OI % Chg
Natural Gas Sep	641.50	667.90	625.80	657.20	18.30	2.86	59084	4101	-22.34
Natural Gas Oct	647.50	672.40	630.90	661.30	18.40	2.86	8168	1525	25.83
Natural Gas Nov	657.10	680.50	642.50	674.50	21.90	3.36	53	276	3.76

MCX PIVOT

Contract	Sup - 3	Sup - 2	Sup - 1	Pivot	Res - 1	Res - 2	Res - 3	OI Status
Crude Oil Sep	6563.00	6685.00	6830.00	6952.00	7097.00	7219.00	7364.00	Short Covering
Natural Gas Sep	590.60	608.20	632.70	650.30	674.80	692.40	716.90	Short Covering

SPREAD SYNOPSIS

Crudeoil				
Month	Rate	Sep	Oct	Nov
Sep	6975.00		-8.00	14.00
Oct	6967.00			22.00
Nov	6989.00			

Natural Gas				
Month	Rate	Sep	Oct	Nov
Sep	657.20		4.10	17.30
Oct	661.30			13.20
Nov	674.50			

Spread History			
Commodity	Max	Min	Avg
Crudeoil	8.00	-296.00	-82.00
Natural Gas	20.60	-35.60	1.00

INTERNATIONAL MARKET SYNOPSIS

Crudeoil Last 4 Day Movement							Pivot		
Date	Open	High	Low	Close	Chg	% Chg	Res - 1	Res - 2	Res - 3
12-Sep-22	86.25	89.1	85.16	87.78	0.99	1.14%	89.53	91.29	93.47
9-Sep-22	82.8	87.2	82.68	86.79	3.25	3.89%	Sup - 1	Sup - 2	Sup - 3
8-Sep-22	81.91	84.25	81.2	83.54	1.6	1.95%	85.59	83.41	81.65
7-Sep-22	86.93	87.76	81.5	81.94	-4.94	-5.69%			

NaturalGas Last 4 Day Movement							Pivot		
Date	Open	High	Low	Close	Chg	% Chg	Res - 1	Res - 2	Res - 3
12-Sep-22	8.026	8.406	7.855	8.249	0.25	3.16%	8.485	8.721	9.036
9-Sep-22	7.975	8.205	7.888	7.996	0.08	1.02%	Sup - 1	Sup - 2	Sup - 3
8-Sep-22	7.841	8.064	7.772	7.915	0.07	0.93%	7.934	7.619	7.383
7-Sep-22	8.039	8.299	7.751	7.842	-0.30	-3.72%			

CRUDEOIL

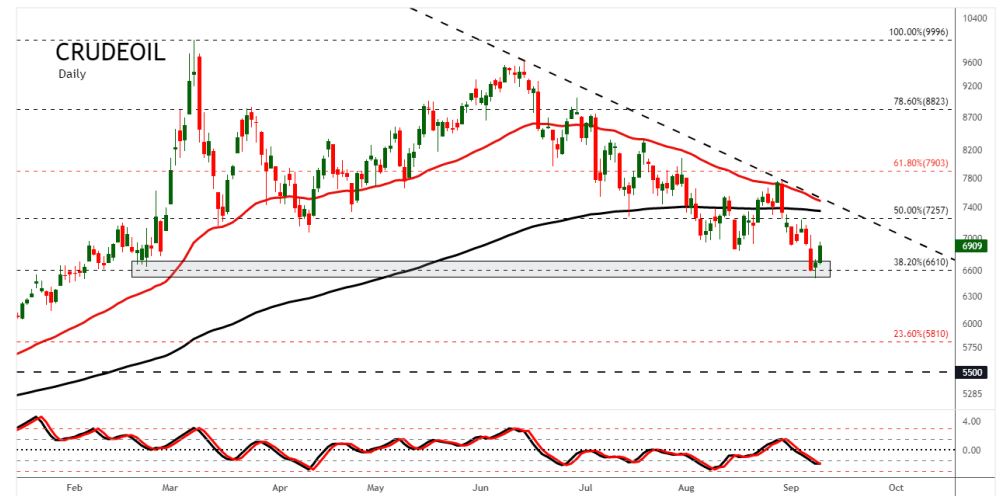
Crude oil trading range for the day is 6685-7219.

Crude oil prices continued to find support after latest threat from Russia to choke off oil and gas supplies if price caps are imposed.

Kazakhstan's oil output fell 13% in August vs July

Crude inventories rose by 8.8 million barrels last week – EIA

The number of active U.S. rigs drilling for oil fell by five to 591 this week, after seeing a decline of nine rigs last week.



NATURAL GAS

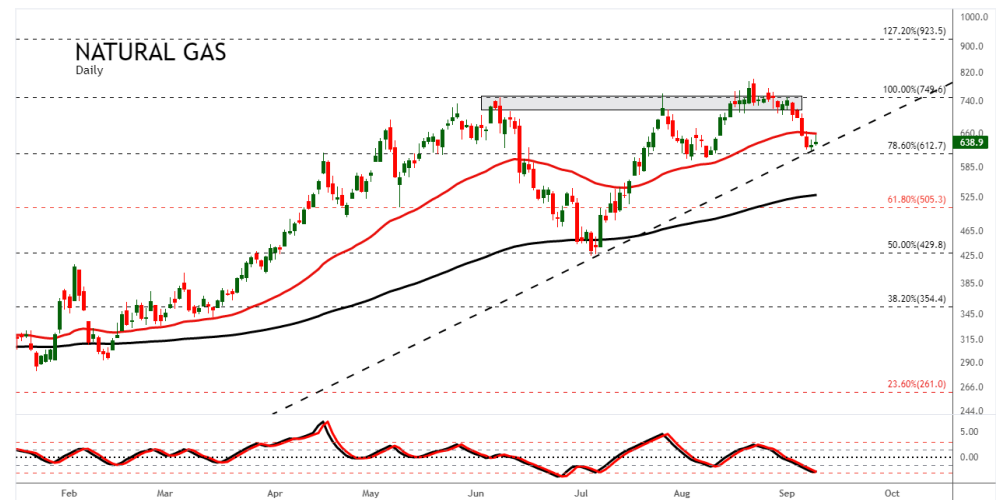
Natural gas trading range for the day is 608.2-692.4.

Natural gas rose on forecasts for warmer weather and higher gas demand in mid to late September.

The U.S. EIA said utilities added 54 billion cubic feet (bcf) of gas to storage during the week.

U.S. natgas output and demand to hit record highs in 2022 – EIA

EIA projected dry gas production will rise to 97.09 bcf in 2022 and 100.36 bcf in 2023



CRUDE OIL PRICE MOVEMENT SINCE 2014

	JAN	FEB	MAR	APR	MAY	JUN	JUL	AUG	SEP	OCT	NOV	DEC	Growth
2014	6169	6371	6119	6015	6106	6337	6006	5831	5673	4931	4210	3369	-2753.00
	0.77	3.27	-3.96	-1.70	1.51	3.78	-5.22	-2.91	-2.71	-13.08	-14.62	-19.98	-44.97
2015	2855	3064	3025	3790	3869	3776	3038	3230	2979	3068	2798	2493	-876.00
	-15.26	7.32	-1.27	25.29	2.08	-2.40	-19.54	6.32	-7.77	2.99	-8.80	-10.90	-26.00
2016	2286	2321	2572	3035	3333	3304	2782	3003	3212	3153	3377	3541	1048.00
	-8.30	1.53	10.81	18.00	9.82	-0.87	-15.80	7.94	6.96	-1.84	7.10	4.86	42.04
2017	3614	3566	3284	3174	3127	2968	3183	3038	3373	3528	3687	3850	309.00
	2.06	-1.33	-7.91	-3.35	-1.48	-5.08	7.24	-4.56	11.03	4.60	4.51	4.42	8.73
2018	4112	4093	4234	4583	4517	5086	4734	4959	5335	4892	3576	3170	-680.00
	6.81	-0.46	3.44	8.24	-1.44	12.60	-6.92	4.75	7.58	-8.30	-26.90	-11.35	-17.66
2019	3869	4090	4185	4467	3775	4095	4032	3958	3880	3853	3980	4386	1216.00
	22.05	5.71	2.32	6.74	-15.49	8.48	-1.54	-1.84	-1.97	-0.70	3.30	10.20	38.36
2020	3683	3263	1689	1315	2564	3015	3023	3145	2934	2642	3326	3524	-862.00
	-16.03	-11.40	-48.24	-22.14	94.98	17.59	0.27	4.04	-6.71	-9.95	25.89	5.95	-19.65
2021	3820	4604	4384	4723	4870	5492	5517	5026	5571	6264	4896	5625	2101.00
	8.40	20.52	-4.78	7.73	3.11	12.77	0.46	-8.90	10.84	12.44	-21.84	14.89	59.62
2022	6561	7291	7766	8117	9026	8387	7842	7197					1572.00
	16.64	11.13	6.51	4.52	11.20	-7.08	-6.50	-8.22					27.95
Average	1.90	4.03	-4.78	4.81	11.59	4.42	-5.28	-0.38	2.16	-1.73	-3.92	-0.24	Average

NATURAL GAS PRICE MOVEMENT SINCE 2014


Year	JAN	FEB	MAR	APR	MAY	JUN	JUL	AUG	SEP	OCT	NOV	DEC	Growth
2014	302.60	288.10	262.50	292.60	271.20	269.90	237.60	246.90	257.80	239.90	259.30	189.10	-76.40
	13.97	-4.79	-8.89	11.47	-7.31	-0.48	-11.97	3.91	4.41	-6.94	8.09	-27.07	-28.78
2015	168.40	167.70	167.00	175.60	169.80	179.90	174.80	178.70	166.70	152.00	150.30	155.90	-33.20
	-10.95	-0.42	-0.42	5.15	-3.30	5.95	-2.83	2.23	-6.72	-8.82	-1.12	3.73	-17.56
2016	155.90	118.10	129.90	143.80	155.00	197.30	192.90	194.40	194.00	204.10	229.60	252.00	96.10
	0.00	-24.25	9.99	10.70	7.79	27.29	-2.23	0.78	-0.21	5.21	12.49	9.76	61.64
2017	212.80	185.00	205.80	212.10	198.60	193.80	180.00	194.80	198.40	187.80	197.10	189.70	-62.30
	-15.56	-13.06	11.24	3.06	-6.36	-2.42	-7.12	8.22	1.85	-5.34	4.95	-3.75	-24.72
2018	190.50	175.90	179.40	183.80	199.50	200.80	192.80	206.90	218.00	241.60	317.40	212.20	22.50
	0.42	-7.66	1.99	2.45	8.54	0.65	-3.98	7.31	5.36	10.83	31.37	-33.14	11.86
2019	201.50	199.50	186.70	180.80	172.30	160.50	155.10	164.00	165.80	187.00	167.20	155.50	-56.70
	-5.04	-0.99	-6.42	-3.16	-4.70	-6.85	-3.36	5.74	1.10	12.79	-10.59	-7.00	-26.72
2020	132.40	124.30	131.50	144.20	135.90	130.40	135.60	190.70	186.50	247.70	216.70	182.10	26.60
	-14.86	-6.12	5.79	9.66	-5.76	-4.05	3.99	40.63	-2.20	32.82	-12.52	-15.97	17.11
2021	191.50	205.90	191.10	218.00	221.80	272.20	290.00	318.30	428.80	409.00	347.00	276.50	94.40
	5.16	7.52	-7.19	14.08	1.74	22.72	6.54	9.76	34.72	-4.62	-15.16	-20.32	51.84
2022	364.30	336.70	436.40	555.80	649.00	447.70	642.70	732.30					455.80
	31.75	-7.58	29.61	27.36	16.77	-31.02	43.56	13.94					164.85
Average	0.55	-6.37	3.97	8.97	0.82	1.31	2.51	10.28	4.79	4.49	2.19	-11.72	Average

GENERAL DISCLAIMERS

KEDIA ADVISORY

This Report is prepared and distributed by Kedia Stocks & Commodities Research Pvt Ltd. for information purposes only. The recommendations, if any, made herein are expression of views and/or opinions and should not be deemed or construed to be neither advice for the purpose of purchase or sale through KSCRPL nor any solicitation or offering of any investment /trading opportunity. These information / opinions / views are not meant to serve as a professional investment guide for the readers. No action is solicited based upon the information provided herein. Recipients of this Report should rely on information/data arising out of their own investigations. Readers are advised to seek independent professional advice and arrive at an informed trading/investment decision before executing any trades or making any investments. This Report has been prepared on the basis of publicly available information, internally developed data and other sources believed by KSCRPL to be reliable. KSCRPL or its directors, employees, affiliates or representatives do not assume any responsibility for, or warrant the accuracy, completeness, adequacy and reliability of such information / opinions / views. While due care has been taken to ensure that the disclosures and opinions given are fair and reasonable, none of the directors, employees, affiliates or representatives of KSCRPL shall be liable for any direct, indirect, special, incidental, consequential, punitive or exemplary damages, including lost profits arising in any way whatsoever from the information / opinions / views contained in this Report. The possession, circulation and/or distribution of this Report may be restricted or regulated in certain jurisdictions by appropriate laws. No action has been or will be taken by KSCRPL in any jurisdiction (other than India), where any action for such purpose(s) is required. Accordingly, this Report shall not be possessed, circulated and/ or distributed in any such country or jurisdiction unless such action is in compliance with all applicable laws and regulations of such country or jurisdiction. KSCRPL requires such recipient to inform himself about and to observe any restrictions at his own expense, without any liability to KSCRPL. Any dispute arising out of this Report shall be subject to the exclusive jurisdiction of the Courts in India.

For more details, please **contact**:

 +91 9323406035 / 9619551022

 info@kediaadvisory.com

 www.kediaadvisory.com

KEDIA STOCKS & COMMODITIES RESEARCH PVT LTD.
Mumbai, IN.

SEBI REGISTRATION NUMBER - INH000006156

