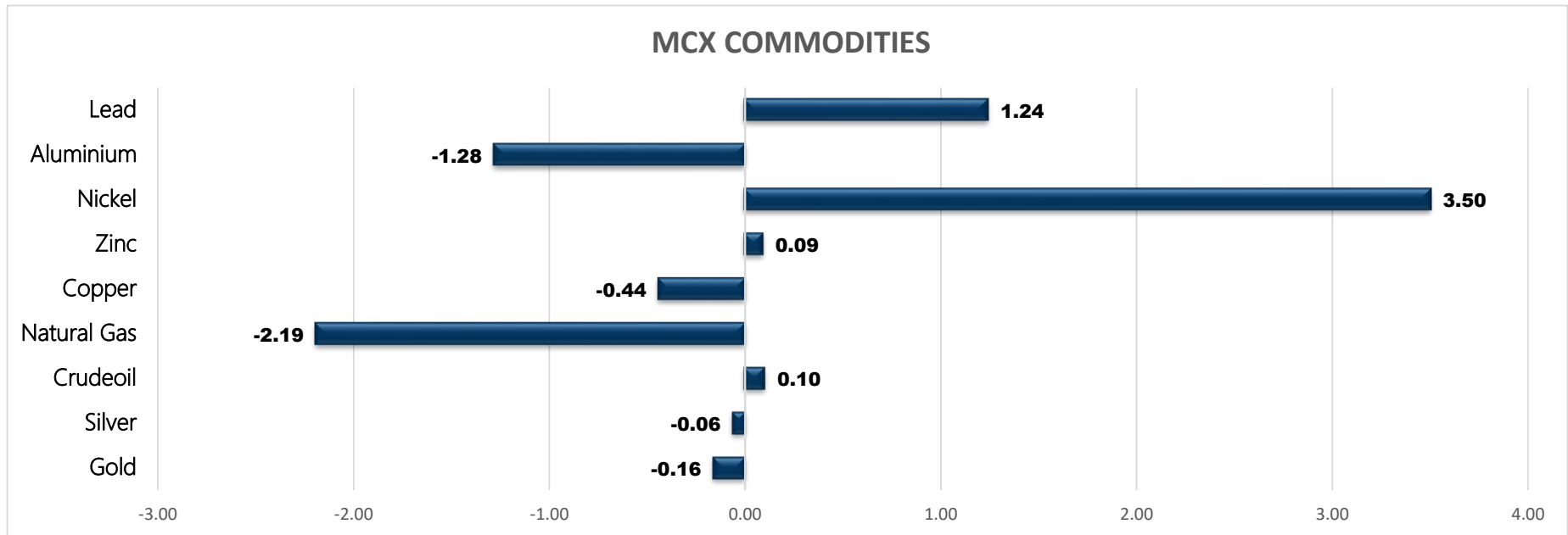




# Basemetals

- Copper
- Zinc
- Nickel
- Lead
- Aluminium

Commodity	Close	% Change	Commodity	Ltp*	% Change	Economical Data	
Gold	49302.00	-0.16	Gold\$	1675.67	0.00	EUR	German PPI m/m
Silver	56684.00	-0.06	Silver\$	19.48	-0.29	EUR	Current Account
Crudeoil	6817.00	0.10	Crudeoil\$	85.36	0.71	USD	Building Permits
Natural Gas	617.10	-2.19	Natural Gas\$	7.75	-0.15	USD	Housing Starts
Copper	648.45	-0.44	Lme Copper	7811.00	0.50	EUR	ECB President Lagarde Speaks
Zinc	282.05	0.09	Lme Zinc	3169.00	0.22		
Nickel	1975.00	3.50	Lme Nickel	24670.00	0.00		
Aluminium	196.55	-1.28	Lme Lead	1888.50	0.35		
Lead	179.70	1.24	Lme Aluminium	2266.00	0.76		



MCX MARKET SYNOPSIS

Contract	Open	High	Low	Close	Rs Chg	% Chg	Volume	OI	OI % Chg
Copper Sep	650.00	651.05	643.50	648.45	-2.85	-0.44	8763	5018	-3.20
Copper Oct	652.85	655.40	648.50	653.30	-2.20	-0.34	1808	1432	36.51
Zinc Sep	281.65	283.50	278.00	282.05	0.25	0.09	3862	1209	-13.21
Zinc Oct	281.20	283.00	277.90	282.05	0.70	0.25	962	617	17.97
Aluminium Sep	199.00	199.00	196.10	196.55	-2.55	-1.28	3450	4804	7.21
Aluminium Oct	199.95	200.70	197.80	198.15	-2.70	-1.34	1112	1363	45.00
Lead Sep	177.40	180.15	177.05	179.70	2.20	1.24	995	556	-5.60
Lead Oct	174.40	176.65	174.20	176.30	1.65	0.94	156	255	5.81

MCX PIVOT

Contract	Sup - 3	Sup - 2	Sup - 1	Pivot	Res - 1	Res - 2	Res - 3	OI Status
Copper Sep	636.90	640.20	644.40	647.70	651.90	655.20	659.40	Long Liquidation
Zinc Sep	273.40	275.70	278.90	281.20	284.40	286.70	289.90	Short Covering
Aluminium Sep	192.50	194.30	195.40	197.20	198.30	200.10	201.20	Fresh Selling
Lead Sep	174.80	175.90	177.90	179.00	181.00	182.10	184.10	Short Covering

INTERNATIONAL MARKET SYNOPSIS

Commodity	Open	High	Low	Ltp*	Chg	% Chg	LME STOCKS	
LME Copper	7850.00	7875.00	7698.50	7772.00	39.00	0.50	LME Copper	3075
LME Zinc	3172.00	3192.50	3099.50	3162.00	7.00	0.22	LME Zinc	-25
LME Nickel	23940.00	25100.00	23550.00	24670.00	0.00	0.00	LME Nickel	12
LME Lead	1894.50	1901.00	1880.00	1882.00	6.50	0.35	LME Lead	-250
LME Aluminium	2284.00	2293.00	2246.00	2249.00	17.00	0.76	LME Aluminium	-1325

INTERNATIONAL PIVOT

Commodity	Sup - 3	Sup - 2	Sup - 1	Pivot	Res - 1	Res - 2	Res - 3
LME Copper	7512	7605	7689	7782	7865	7958	8042
LME Zinc	3017	3058	3110	3151	3203	3244	3296
LME Nickel	22230	22890	23780	24440	25330	25990	26880
LME Lead	1853	1867	1874	1888	1895	1909	1916
LME Aluminium	2185	2216	2232	2263	2279	2310	2326

COPPER

Copper trading range for the day is 640.2-655.2.

Copper dropped amid signs of lower demand for industrial and construction inputs in top consumer China.

Chinese NBS pointed to a further decline in prices in the country's important real estate sector, and new home prices fell

New Covid outbreaks in Guangzhou and Shenzhen led governments to enforce lockdowns for millions, adding to concerns of lower economic activity.

Warehouse stock for Copper at LME was at 105075mt that is up by 3075mt.



ZINC

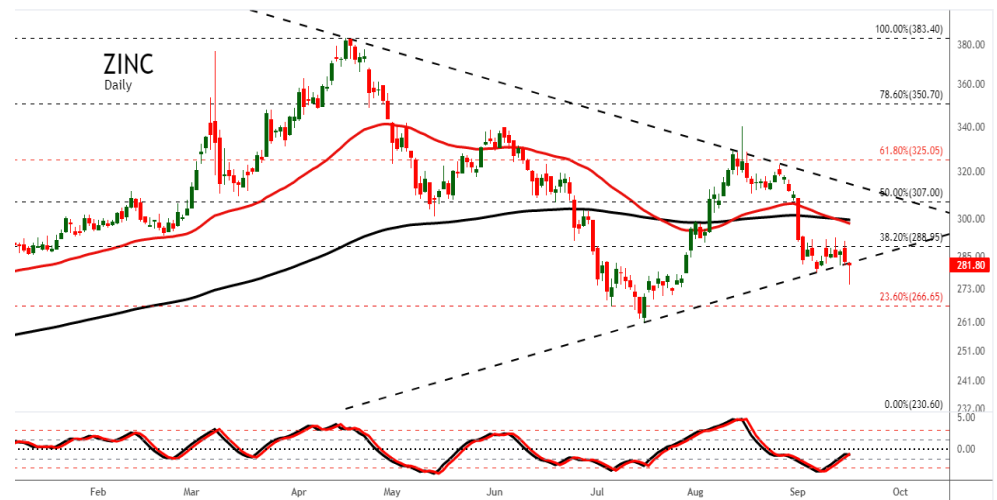
Zinc trading range for the day is 275.7-286.7.

Zinc prices recovered amid persistent supply concerns.

PBoC cuts 14-day reverse repo rate to 2.15%

FDI into china rises 16.4%yoy in Jan-August

Warehouse stock for Zinc at LME was at 75675mt that is down by -25mt.



NICKEL

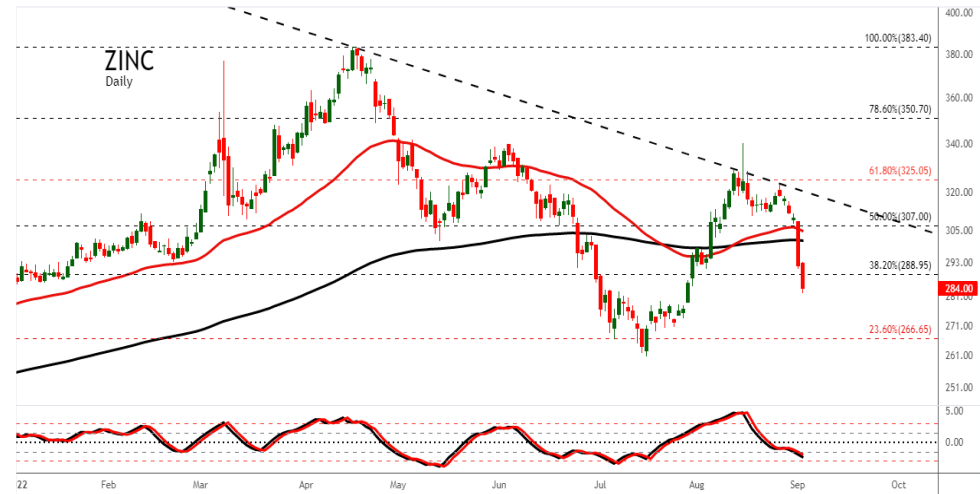
Nickel trading range for the day is 658.3-658.3.

Nickel settled flat as Sumitomo Metal sees global nickel demand for battery use at 410,000 in 2022

Global nickel market sees surplus in February – INSG

Nickel briquette prices stood above 200,000 yuan/mt, and demand from nickel sulphate plants may contract.

Warehouse stock for Nickel at LME was at 51702mt that is up by 12mt.



ALUMINIUM

Aluminium trading range for the day is 194.3-200.1.

Aluminium dropped as concerns about an economic and manufacturing slowdown prevailed.

Some pressure also seen on fears of oversupply when LME warehouse aluminium stockpiles increased by 11% from their lows.

China's aluminium imports in August dropped 19% from a year earlier to 200,440 tonnes.

Warehouse stock for Aluminium at LME was at 346325mt that is down by -1325mt.



## COPPER PRICE MOVEMENT SINCE 2014

Year	JAN	FEB	MAR	APR	MAY	JUN	JUL	AUG	SEP	OCT	NOV	DEC	Growth
2014	444.95	443.20	404.15	403.00	410.80	422.35	436.10	417.95	416.00	414.70	390.75	399.10	-69.45
	-5.04	-0.39	-8.81	-0.28	1.94	2.81	3.26	-4.16	-0.47	-0.31	-5.78	2.14	-14.82
2015	342.85	371.80	378.45	404.60	386.65	368.75	335.40	341.75	342.70	336.55	301.15	315.50	-83.60
	-14.09	8.44	1.79	6.91	-4.44	-4.63	-9.04	1.89	0.28	-1.79	-10.52	4.77	-20.95
2016	311.60	322.00	321.25	334.20	312.50	327.15	329.70	305.60	328.55	326.05	396.05	372.90	57.40
	-1.24	3.34	-0.23	4.03	-6.49	4.69	0.78	-7.31	7.51	-0.76	21.47	-5.85	18.19
2017	406.10	397.85	380.75	367.60	368.75	385.20	410.65	434.55	427.95	444.70	431.40	466.00	93.10
	8.90	-2.03	-4.30	-3.45	0.31	4.46	6.61	5.82	-1.52	3.91	-2.99	8.02	24.97
2018	450.90	446.00	436.80	449.40	457.05	446.15	430.15	414.00	452.95	435.70	433.10	407.75	-58.25
	-3.24	-1.09	-2.06	2.88	1.70	-2.38	-3.59	-3.75	9.41	-3.81	-0.60	-5.85	-12.50
2019	437.60	464.70	451.05	450.30	404.50	411.05	444.15	443.95	438.05	437.95	432.60	441.25	33.50
	7.32	6.19	-2.94	-0.17	-10.17	1.62	8.05	-0.05	-1.33	-0.02	-1.22	2.00	8.22
2020	427.25	421.80	376.80	403.45	416.20	464.70	500.75	527.30	525.20	526.40	582.30	594.70	153.45
	-3.17	-1.28	-10.67	7.07	3.16	11.65	7.76	5.30	-0.40	0.23	10.62	2.13	34.78
2021	596.40	702.95	667.95	754.10	768.85	721.50	751.70	720.95	697.80	745.10	725.30	748.90	154.20
	0.29	17.87	-4.98	12.90	1.96	-6.16	4.19	-4.09	-3.21	6.78	-2.66	3.25	25.93
2022	736.25	767.50	821.45	782.85	774.60	694.15	657.15	649.45					-99.45
	-1.69	4.24	7.03	-4.70	-1.05	-10.39	-5.33	-1.17					-13.28
Average	-1.33	3.92	-2.80	2.80	-1.45	0.19	1.41	-0.84	1.28	0.53	1.04	1.33	Average

## ZINC PRICE MOVEMENT SINCE 2014

Year	JAN	FEB	MAR	APR	MAY	JUN	JUL	AUG	SEP	OCT	NOV	DEC	Growth
2014	122.80	130.95	119.05	123.95	122.40	132.45	144.55	142.90	141.10	143.40	138.00	137.20	8.15
	-4.84	6.64	-9.09	4.12	-1.25	8.21	9.14	-1.14	-1.26	1.63	-3.77	-0.58	6.32
2015	130.40	127.70	129.90	149.75	141.05	127.10	122.85	121.30	108.90	109.10	103.20	106.15	-31.05
	-4.96	-2.07	1.72	15.28	-5.81	-9.89	-3.34	-1.26	-10.22	0.18	-5.41	2.86	-22.63
2016	109.25	122.45	118.40	129.20	129.30	142.15	148.80	155.90	158.10	163.90	185.55	173.80	67.65
	2.92	12.08	-3.31	9.12	0.08	9.94	4.68	4.77	1.41	3.67	13.21	-6.33	63.73
2017	193.10	187.70	180.40	169.45	165.95	178.25	179.50	200.95	210.20	215.05	205.95	207.60	33.80
	11.10	-2.80	-3.89	-6.07	-2.07	7.41	0.70	11.95	4.60	2.31	-4.23	0.80	19.45
2018	228.60	227.75	214.10	211.75	209.05	202.15	180.40	176.10	186.65	192.60	180.20	171.95	-35.65
	10.12	-0.37	-5.99	-1.10	-1.28	-3.30	-10.76	-2.38	5.99	3.19	-6.44	-4.58	-17.17
2019	195.15	197.80	221.35	223.20	203.00	200.50	192.25	185.30	185.55	187.85	185.05	179.00	7.05
	13.49	1.36	11.91	0.84	-9.05	-1.23	-4.11	-3.62	0.13	1.24	-1.49	-3.27	4.10
2020	174.45	154.85	145.50	150.60	159.00	163.50	184.00	196.05	190.80	201.80	220.20	214.40	35.40
	-2.54	-11.24	-6.04	3.51	5.58	2.83	12.54	6.55	-2.68	5.77	9.12	-2.63	19.78
2021	205.90	219.55	220.00	232.45	237.35	240.20	248.15	244.80	252.10	287.05	270.50	287.95	73.55
	-3.96	6.63	0.20	5.66	2.11	1.20	3.31	-1.35	2.98	13.86	-5.77	6.45	34.31
2022	295.85	304.10	344.50	343.60	333.65	287.40	295.85	309.90					21.95
	2.74	2.79	13.29	-0.26	-2.90	-13.86	2.94	4.75					7.62
Average	2.67	1.45	-0.13	3.45	-1.62	0.15	1.68	2.03	0.12	3.98	-0.60	-0.91	Average

## NICKEL PRICE MOVEMENT SINCE 2014

Year	JAN	FEB	MAR	APR	MAY	JUN	JUL	AUG	SEP	OCT	NOV	DEC	Growth
2014	855.80	902.80	945.50	1097.40	1139.60	1124.30	1130.40	1140.30	1016.80	971.00	996.80	945.70	81.20
	-1.01	5.49	4.73	16.07	3.85	-1.34	0.54	0.88	-10.83	-4.50	2.66	-5.13	9.49
2015	922.90	874.90	779.70	881.00	808.00	744.50	698.50	668.10	661.90	660.90	583.50	582.00	-363.70
	-2.41	-5.20	-10.88	12.99	-8.29	-7.86	-6.18	-4.35	-0.93	-0.15	-11.71	-0.26	-38.46
2016	579.80	577.60	549.10	629.10	568.50	636.40	700.00	651.20	703.30	696.30	751.20	706.00	169.20
	-0.38	-0.38	-4.93	14.57	-9.63	11.94	9.99	-6.97	8.00	-1.00	7.88	-6.02	29.07
2017	670.30	725.30	640.10	608.90	568.50	600.60	655.70	743.70	692.60	766.30	727.50	783.40	77.40
	-5.06	8.21	-11.75	-4.87	-6.63	5.65	9.17	13.42	-6.87	10.64	-5.06	7.68	10.96
2018	863.10	898.30	840.50	926.40	1024.40	1022.30	944.00	909.30	905.00	860.00	774.80	741.60	-41.80
	10.17	4.08	-6.43	10.22	10.58	-0.20	-7.66	-3.68	-0.47	-4.97	-9.91	-4.28	-5.34
2019	884.90	931.10	904.00	854.60	876.50	906.00	1013.50	1245.40	1216.80	1200.40	1005.50	1029.20	287.60
	19.32	5.22	-2.91	-5.46	2.56	3.37	11.87	22.88	-2.30	-1.35	-16.24	2.36	38.78
2020	943.80	901.00	860.10	922.60	940.40	975.00	1041.90	1135.70	1065.30	1142.70	1206.70	1212.20	183.00
	-8.30	-4.53	-4.54	7.27	1.93	3.68	6.86	9.00	-6.20	7.27	5.60	0.46	17.78
2021	1286.90	1367.70	1184.10	1316.90	1328.40	1363.90	1484.10	1446.00	1384.50	1520.50	1541.20	1569.60	357.40
	6.16	6.28	-13.42	11.22	0.87	2.67	8.81	-2.57	-4.25	9.82	1.36	1.84	29.48
2022	1689.80	1852.50	2410.00	2474.20	2304.00	2043.40	1948.30	1948.30					378.70
	7.66	9.63	30.09	2.66	-6.88	-11.31	-4.65	1822.00					24.13
Average	3.40	2.91	-3.10	6.07	-1.94	0.99	3.53	231.22	-1.86	2.89	-4.01	0.25	Average



## ALUMINIUM PRICE MOVEMENT SINCE 2014

Year	JAN	FEB	MAR	APR	MAY	JUN	JUL	AUG	SEP	OCT	NOV	DEC	Growth
2014	103.90	107.00	104.00	106.75	107.65	111.20	121.45	126.70	119.20	126.85	128.35	116.00	6.80
	-4.85	2.98	-2.80	2.64	0.84	3.30	9.22	4.32	-5.92	6.42	1.18	-9.62	6.23
2015	113.45	112.40	111.95	121.40	108.75	104.95	102.00	107.15	102.60	94.40	96.35	100.15	-15.85
	-2.20	-0.93	-0.40	8.44	-10.42	-3.49	-2.81	5.05	-4.25	-7.99	2.07	3.94	-13.66
2016	103.80	111.25	98.90	111.25	104.00	110.55	108.30	107.20	110.55	115.95	118.00	117.20	17.05
	3.64	7.18	-11.10	12.49	-6.52	6.30	-2.04	-1.02	3.12	4.88	1.77	-0.68	17.02
2017	123.40	126.45	126.20	123.90	123.90	123.55	121.95	135.30	137.90	138.60	131.00	143.30	26.10
	5.29	2.47	-0.20	-1.82	0.00	-0.28	-1.30	10.95	1.92	0.51	-5.48	9.39	22.27
2018	141.65	140.50	130.65	148.50	154.15	149.70	141.40	150.10	145.90	143.95	137.20	128.15	-15.15
	-1.15	-0.81	-7.01	13.66	3.80	-2.89	-5.54	6.15	-2.80	-1.34	-4.69	-6.60	-10.57
2019	136.00	151.10	149.15	146.20	145.35	143.20	140.35	138.70	134.60	132.00	133.55	137.25	9.10
	6.13	11.10	-1.29	-1.98	-0.58	-1.48	-1.99	-1.18	-2.96	-1.93	1.17	2.77	7.10
2020	139.10	136.70	134.45	131.00	131.70	137.95	140.90	146.15	143.80	152.95	167.05	160.95	23.70
	1.35	-1.73	-1.65	-2.57	0.53	4.75	2.14	3.73	-1.61	6.36	9.22	-3.65	17.27
2021	162.25	173.50	176.65	193.70	196.65	198.75	206.75	212.85	227.15	221.30	211.20	225.25	64.30
	0.81	6.93	1.82	9.65	1.52	1.07	4.03	2.95	6.72	-2.58	-4.56	6.65	39.95
2022	241.55	273.45	281.95	252.90	235.30	208.80	214.85	206.25					-19.00
	7.24	13.21	3.11	-10.30	-6.96	-11.26	2.90	-4.00					-8.44
Average	1.81	4.49	-2.17	3.36	-1.97	-0.44	0.51	2.99	-0.72	0.54	0.08	0.28	Average

# GENERAL DISCLAIMERS

KEDIA ADVISORY

This Report is prepared and distributed by Kedia Stocks & Commodities Research Pvt Ltd. for information purposes only. The recommendations, if any, made herein are expression of views and/or opinions and should not be deemed or construed to be neither advice for the purpose of purchase or sale through KSCRPL nor any solicitation or offering of any investment /trading opportunity. These information / opinions / views are not meant to serve as a professional investment guide for the readers. No action is solicited based upon the information provided herein. Recipients of this Report should rely on information/data arising out of their own investigations. Readers are advised to seek independent professional advice and arrive at an informed trading/investment decision before executing any trades or making any investments. This Report has been prepared on the basis of publicly available information, internally developed data and other sources believed by KSCRPL to be reliable. KSCRPL or its directors, employees, affiliates or representatives do not assume any responsibility for, or warrant the accuracy, completeness, adequacy and reliability of such information / opinions / views. While due care has been taken to ensure that the disclosures and opinions given are fair and reasonable, none of the directors, employees, affiliates or representatives of KSCRPL shall be liable for any direct, indirect, special, incidental, consequential, punitive or exemplary damages, including lost profits arising in any way whatsoever from the information / opinions / views contained in this Report. The possession, circulation and/or distribution of this Report may be restricted or regulated in certain jurisdictions by appropriate laws. No action has been or will be taken by KSCRPL in any jurisdiction (other than India), where any action for such purpose(s) is required. Accordingly, this Report shall not be possessed, circulated and/ or distributed in any such country or jurisdiction unless such action is in compliance with all applicable laws and regulations of such country or jurisdiction. KSCRPL requires such recipient to inform himself about and to observe any restrictions at his own expense, without any liability to KSCRPL. Any dispute arising out of this Report shall be subject to the exclusive jurisdiction of the Courts in India.

For more details, please **contact**:

 +91 9323406035 / 9619551022

 [info@kediaadvisory.com](mailto:info@kediaadvisory.com)

 [www.kediaadvisory.com](http://www.kediaadvisory.com)

KEDIA STOCKS & COMMODITIES RESEARCH PVT LTD.  
Mumbai, IN.

SEBI REGISTRATION NUMBER - INH000006156

