



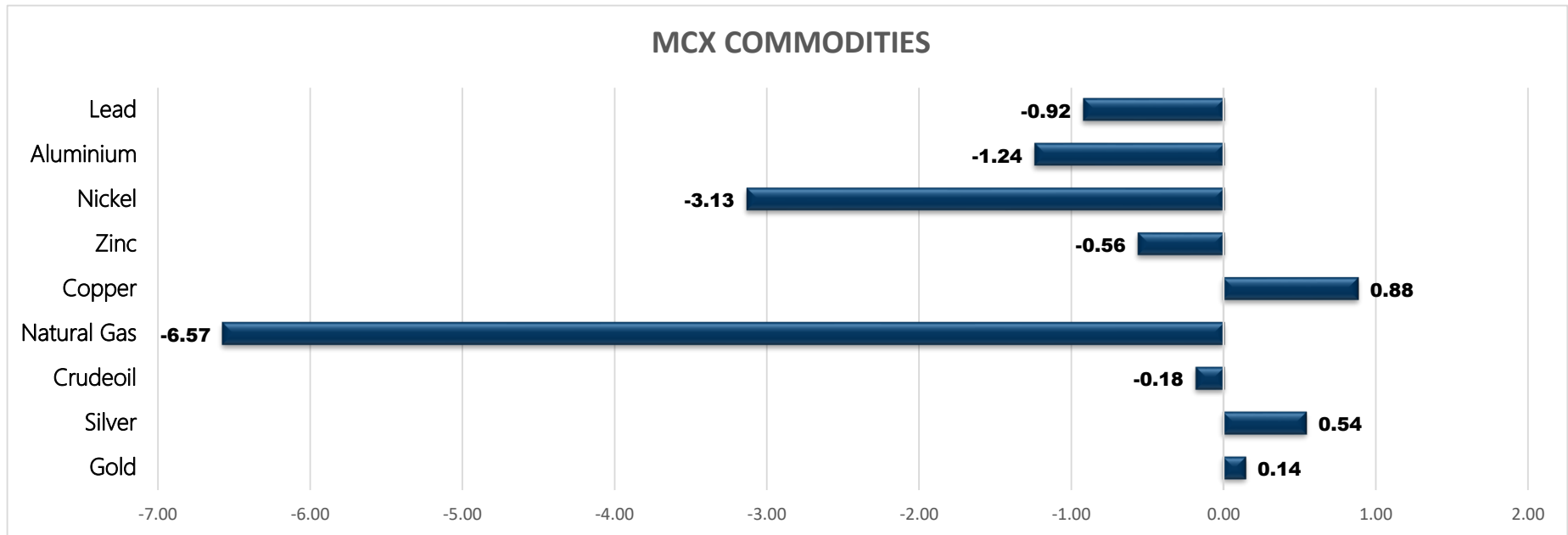
# Basemetals

- Copper
- Zinc
- Nickel
- Lead
- Aluminium

Commodity	Close	% Change
Gold	49380.00	0.14
Silver	56720.00	0.54
Crudeoil	6810.00	-0.18
Natural Gas	630.90	-6.57
Copper	651.30	0.88
Zinc	281.80	-0.56
Nickel	1908.30	-3.13
Aluminium	199.10	-1.24
Lead	177.50	-0.92

Commodity	Ltp*	% Change
Gold\$	1668.46	-0.40
Silver\$	19.37	-0.95
Crudeoil\$	84.76	0.13
Natural Gas\$	7.76	-6.73
Lme Copper	7784.00	-0.33
Lme Zinc	3160.00	0.17
Lme Nickel	24490.00	0.00
Lme Lead	1887.00	0.11
Lme Aluminium	2273.50	-0.42

Economical Data	
EUR	German Buba Monthly Report
USD	NAHB Housing Market Index



## MCX MARKET SYNOPSIS

Contract	Open	High	Low	Close	Rs Chg	% Chg	Volume	OI	OI % Chg
Copper Sep	645.90	652.00	635.45	651.30	5.70	0.88	12672	5184	-11.08
Copper Oct	649.80	656.00	640.50	655.50	5.30	0.82	1371	1049	11.95
Zinc Sep	282.60	282.80	274.50	281.80	-1.60	-0.56	5866	1393	-4.06
Zinc Oct	282.60	282.60	274.50	281.35	-2.55	-0.90	1087	523	0.00
Aluminium Sep	200.25	200.75	196.85	199.10	-2.50	-1.24	5747	4481	5.71
Aluminium Oct	201.70	202.50	198.80	200.85	-2.20	-1.08	860	940	21.92
Lead Sep	179.60	179.60	175.60	177.50	-1.65	-0.92	1165	589	1.03
Lead Oct	175.55	175.95	173.55	174.65	-1.70	-0.96	196	241	30.98

## MCX PIVOT

Contract	Sup - 3	Sup - 2	Sup - 1	Pivot	Res - 1	Res - 2	Res - 3	OI Status
Copper Sep	624.00	629.70	640.60	646.30	657.20	662.90	673.80	Short Covering
Zinc Sep	268.30	271.40	276.60	279.70	284.90	288.00	293.20	Long Liquidation
Aluminium Sep	193.20	195.00	197.10	198.90	201.00	202.80	204.90	Fresh Selling
Lead Sep	171.60	173.60	175.60	177.60	179.60	181.60	183.60	Fresh Selling

## INTERNATIONAL MARKET SYNOPSIS

Commodity	Open	High	Low	Ltp*	Chg	% Chg	LME STOCKS	
LME Copper	7686.00	7831.50	7601.00	7809.50	-25.50	-0.33	LME Copper	-1225
LME Zinc	3170.00	3192.00	3056.00	3154.50	5.50	0.17	LME Zinc	-400
LME Nickel	23200.00	24550.00	22995.00	24490.00	0.00	0.00	LME Nickel	-192
LME Lead	1914.00	1918.00	1882.50	1885.00	2.00	0.11	LME Lead	-575
LME Aluminium	2312.50	2312.50	2248.00	2283.00	-9.50	-0.42	LME Aluminium	-2000

## INTERNATIONAL PIVOT

Commodity	Sup - 3	Sup - 2	Sup - 1	Pivot	Res - 1	Res - 2	Res - 3
LME Copper	7433	7517	7663	7747	7894	7978	8124
LME Zinc	2940	2998	3076	3134	3212	3270	3348
LME Nickel	21918	22457	23473	24012	25028	25567	26583
LME Lead	1837	1860	1872	1895	1908	1931	1943
LME Aluminium	2185	2217	2250	2281	2314	2346	2379

COPPER

Copper trading range for the day is 629.7-662.9.

Copper prices gained as some support seen after China's factory output grew faster than predicted and LME copper inventories kept falling

Copper inventories in warehouses monitored by the Shanghai Futures Exchange fell 1.4 % from last Friday, the exchange said.

Yangshan copper import premiums have fallen to \$93 a tonne from \$112.50 last month, suggesting weaker demand for overseas metal.

Warehouse stock for Copper at LME was at 102000mt that is down by -1225mt.



ZINC

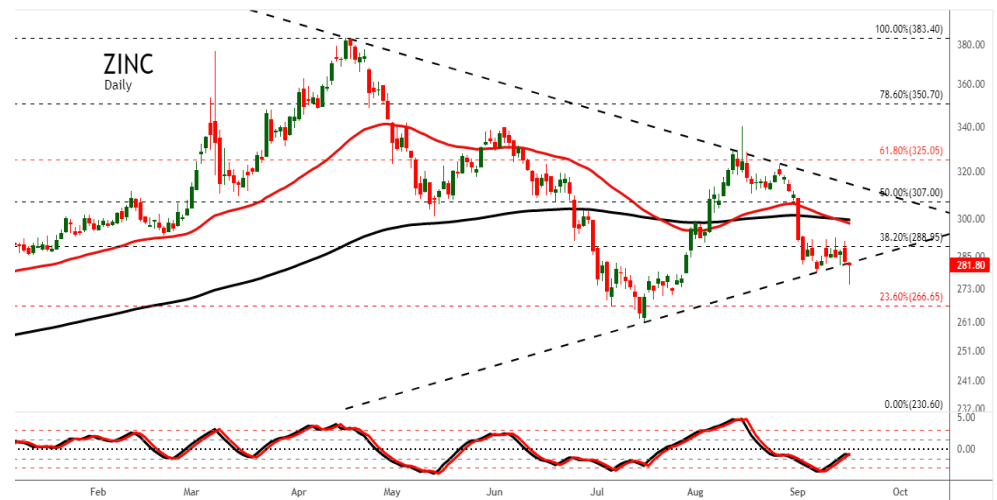
Zinc trading range for the day is 271.4-288.

Zinc dropped as investors braced for a U.S. rate hike amid growing concerns of a global recession following warnings from the World Bank and IMF.

China retail sales rise the most in 3 months

China factory output growth at 5-month high

Warehouse stock for Zinc at LME was at 75700mt that is down by -400mt.



NICKEL

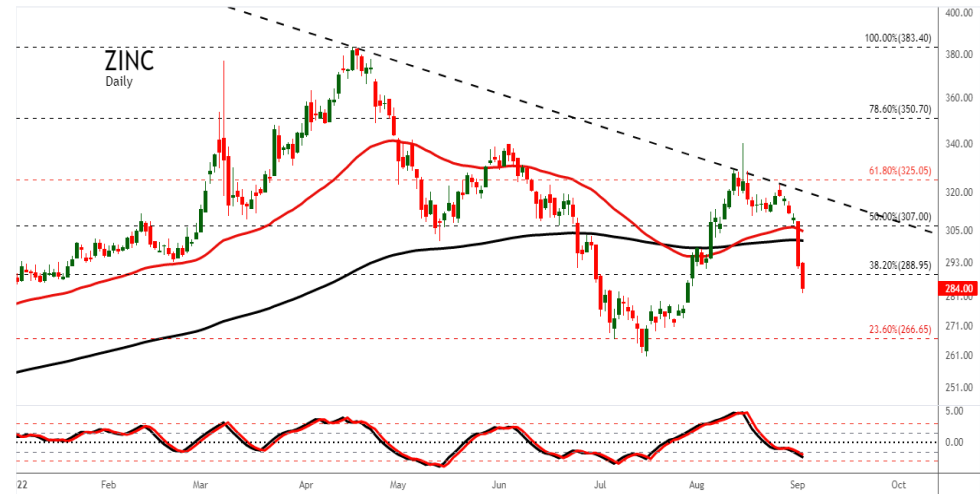
Nickel trading range for the day is 636.1-636.1.

Nickel settled flat as Sumitomo Metal sees global nickel demand for battery use at 410,000 in 2022

Global nickel market sees surplus in February – INSG

Nickel briquette prices stood above 200,000 yuan/mt, and demand from nickel sulphate plants may contract.

Warehouse stock for Nickel at LME was at 51690mt that is down by -192mt.



ALUMINIUM

Aluminium trading range for the day is 195-202.8.

Aluminum dropped as China aluminium production up 9.6 % to 3.51 mln tonnes in August

Prices were also pressured by gloomy demand outlook against the backdrop of Fed likely aggressive interest rate hikes and a firm dollar.

CME says aluminium futures average daily volumes have surged in Q3

Warehouse stock for Aluminium at LME was at 347650mt that is down by -2000mt.



## COPPER PRICE MOVEMENT SINCE 2014

Year	JAN	FEB	MAR	APR	MAY	JUN	JUL	AUG	SEP	OCT	NOV	DEC	Growth
2014	444.95	443.20	404.15	403.00	410.80	422.35	436.10	417.95	416.00	414.70	390.75	399.10	-69.45
	-5.04	-0.39	-8.81	-0.28	1.94	2.81	3.26	-4.16	-0.47	-0.31	-5.78	2.14	-14.82
2015	342.85	371.80	378.45	404.60	386.65	368.75	335.40	341.75	342.70	336.55	301.15	315.50	-83.60
	-14.09	8.44	1.79	6.91	-4.44	-4.63	-9.04	1.89	0.28	-1.79	-10.52	4.77	-20.95
2016	311.60	322.00	321.25	334.20	312.50	327.15	329.70	305.60	328.55	326.05	396.05	372.90	57.40
	-1.24	3.34	-0.23	4.03	-6.49	4.69	0.78	-7.31	7.51	-0.76	21.47	-5.85	18.19
2017	406.10	397.85	380.75	367.60	368.75	385.20	410.65	434.55	427.95	444.70	431.40	466.00	93.10
	8.90	-2.03	-4.30	-3.45	0.31	4.46	6.61	5.82	-1.52	3.91	-2.99	8.02	24.97
2018	450.90	446.00	436.80	449.40	457.05	446.15	430.15	414.00	452.95	435.70	433.10	407.75	-58.25
	-3.24	-1.09	-2.06	2.88	1.70	-2.38	-3.59	-3.75	9.41	-3.81	-0.60	-5.85	-12.50
2019	437.60	464.70	451.05	450.30	404.50	411.05	444.15	443.95	438.05	437.95	432.60	441.25	33.50
	7.32	6.19	-2.94	-0.17	-10.17	1.62	8.05	-0.05	-1.33	-0.02	-1.22	2.00	8.22
2020	427.25	421.80	376.80	403.45	416.20	464.70	500.75	527.30	525.20	526.40	582.30	594.70	153.45
	-3.17	-1.28	-10.67	7.07	3.16	11.65	7.76	5.30	-0.40	0.23	10.62	2.13	34.78
2021	596.40	702.95	667.95	754.10	768.85	721.50	751.70	720.95	697.80	745.10	725.30	748.90	154.20
	0.29	17.87	-4.98	12.90	1.96	-6.16	4.19	-4.09	-3.21	6.78	-2.66	3.25	25.93
2022	736.25	767.50	821.45	782.85	774.60	694.15	657.15	649.45					-99.45
	-1.69	4.24	7.03	-4.70	-1.05	-10.39	-5.33	-1.17					-13.28
Average	-1.33	3.92	-2.80	2.80	-1.45	0.19	1.41	-0.84	1.28	0.53	1.04	1.33	Average

## ZINC PRICE MOVEMENT SINCE 2014

Year	JAN	FEB	MAR	APR	MAY	JUN	JUL	AUG	SEP	OCT	NOV	DEC	Growth
2014	122.80	130.95	119.05	123.95	122.40	132.45	144.55	142.90	141.10	143.40	138.00	137.20	8.15
	-4.84	6.64	-9.09	4.12	-1.25	8.21	9.14	-1.14	-1.26	1.63	-3.77	-0.58	6.32
2015	130.40	127.70	129.90	149.75	141.05	127.10	122.85	121.30	108.90	109.10	103.20	106.15	-31.05
	-4.96	-2.07	1.72	15.28	-5.81	-9.89	-3.34	-1.26	-10.22	0.18	-5.41	2.86	-22.63
2016	109.25	122.45	118.40	129.20	129.30	142.15	148.80	155.90	158.10	163.90	185.55	173.80	67.65
	2.92	12.08	-3.31	9.12	0.08	9.94	4.68	4.77	1.41	3.67	13.21	-6.33	63.73
2017	193.10	187.70	180.40	169.45	165.95	178.25	179.50	200.95	210.20	215.05	205.95	207.60	33.80
	11.10	-2.80	-3.89	-6.07	-2.07	7.41	0.70	11.95	4.60	2.31	-4.23	0.80	19.45
2018	228.60	227.75	214.10	211.75	209.05	202.15	180.40	176.10	186.65	192.60	180.20	171.95	-35.65
	10.12	-0.37	-5.99	-1.10	-1.28	-3.30	-10.76	-2.38	5.99	3.19	-6.44	-4.58	-17.17
2019	195.15	197.80	221.35	223.20	203.00	200.50	192.25	185.30	185.55	187.85	185.05	179.00	7.05
	13.49	1.36	11.91	0.84	-9.05	-1.23	-4.11	-3.62	0.13	1.24	-1.49	-3.27	4.10
2020	174.45	154.85	145.50	150.60	159.00	163.50	184.00	196.05	190.80	201.80	220.20	214.40	35.40
	-2.54	-11.24	-6.04	3.51	5.58	2.83	12.54	6.55	-2.68	5.77	9.12	-2.63	19.78
2021	205.90	219.55	220.00	232.45	237.35	240.20	248.15	244.80	252.10	287.05	270.50	287.95	73.55
	-3.96	6.63	0.20	5.66	2.11	1.20	3.31	-1.35	2.98	13.86	-5.77	6.45	34.31
2022	295.85	304.10	344.50	343.60	333.65	287.40	295.85	309.90					21.95
	2.74	2.79	13.29	-0.26	-2.90	-13.86	2.94	4.75					7.62
Average	2.67	1.45	-0.13	3.45	-1.62	0.15	1.68	2.03	0.12	3.98	-0.60	-0.91	Average

## NICKEL PRICE MOVEMENT SINCE 2014

Year	JAN	FEB	MAR	APR	MAY	JUN	JUL	AUG	SEP	OCT	NOV	DEC	Growth
2014	855.80	902.80	945.50	1097.40	1139.60	1124.30	1130.40	1140.30	1016.80	971.00	996.80	945.70	81.20
	-1.01	5.49	4.73	16.07	3.85	-1.34	0.54	0.88	-10.83	-4.50	2.66	-5.13	9.49
2015	922.90	874.90	779.70	881.00	808.00	744.50	698.50	668.10	661.90	660.90	583.50	582.00	-363.70
	-2.41	-5.20	-10.88	12.99	-8.29	-7.86	-6.18	-4.35	-0.93	-0.15	-11.71	-0.26	-38.46
2016	579.80	577.60	549.10	629.10	568.50	636.40	700.00	651.20	703.30	696.30	751.20	706.00	169.20
	-0.38	-0.38	-4.93	14.57	-9.63	11.94	9.99	-6.97	8.00	-1.00	7.88	-6.02	29.07
2017	670.30	725.30	640.10	608.90	568.50	600.60	655.70	743.70	692.60	766.30	727.50	783.40	77.40
	-5.06	8.21	-11.75	-4.87	-6.63	5.65	9.17	13.42	-6.87	10.64	-5.06	7.68	10.96
2018	863.10	898.30	840.50	926.40	1024.40	1022.30	944.00	909.30	905.00	860.00	774.80	741.60	-41.80
	10.17	4.08	-6.43	10.22	10.58	-0.20	-7.66	-3.68	-0.47	-4.97	-9.91	-4.28	-5.34
2019	884.90	931.10	904.00	854.60	876.50	906.00	1013.50	1245.40	1216.80	1200.40	1005.50	1029.20	287.60
	19.32	5.22	-2.91	-5.46	2.56	3.37	11.87	22.88	-2.30	-1.35	-16.24	2.36	38.78
2020	943.80	901.00	860.10	922.60	940.40	975.00	1041.90	1135.70	1065.30	1142.70	1206.70	1212.20	183.00
	-8.30	-4.53	-4.54	7.27	1.93	3.68	6.86	9.00	-6.20	7.27	5.60	0.46	17.78
2021	1286.90	1367.70	1184.10	1316.90	1328.40	1363.90	1484.10	1446.00	1384.50	1520.50	1541.20	1569.60	357.40
	6.16	6.28	-13.42	11.22	0.87	2.67	8.81	-2.57	-4.25	9.82	1.36	1.84	29.48
2022	1689.80	1852.50	2410.00	2474.20	2304.00	2043.40	1948.30	1948.30					378.70
	7.66	9.63	30.09	2.66	-6.88	-11.31	-4.65	1822.00					24.13
Average	3.40	2.91	-3.10	6.07	-1.94	0.99	3.53	231.22	-1.86	2.89	-4.01	0.25	Average



## ALUMINIUM PRICE MOVEMENT SINCE 2014

Year	JAN	FEB	MAR	APR	MAY	JUN	JUL	AUG	SEP	OCT	NOV	DEC	Growth
2014	103.90	107.00	104.00	106.75	107.65	111.20	121.45	126.70	119.20	126.85	128.35	116.00	6.80
	-4.85	2.98	-2.80	2.64	0.84	3.30	9.22	4.32	-5.92	6.42	1.18	-9.62	6.23
2015	113.45	112.40	111.95	121.40	108.75	104.95	102.00	107.15	102.60	94.40	96.35	100.15	-15.85
	-2.20	-0.93	-0.40	8.44	-10.42	-3.49	-2.81	5.05	-4.25	-7.99	2.07	3.94	-13.66
2016	103.80	111.25	98.90	111.25	104.00	110.55	108.30	107.20	110.55	115.95	118.00	117.20	17.05
	3.64	7.18	-11.10	12.49	-6.52	6.30	-2.04	-1.02	3.12	4.88	1.77	-0.68	17.02
2017	123.40	126.45	126.20	123.90	123.90	123.55	121.95	135.30	137.90	138.60	131.00	143.30	26.10
	5.29	2.47	-0.20	-1.82	0.00	-0.28	-1.30	10.95	1.92	0.51	-5.48	9.39	22.27
2018	141.65	140.50	130.65	148.50	154.15	149.70	141.40	150.10	145.90	143.95	137.20	128.15	-15.15
	-1.15	-0.81	-7.01	13.66	3.80	-2.89	-5.54	6.15	-2.80	-1.34	-4.69	-6.60	-10.57
2019	136.00	151.10	149.15	146.20	145.35	143.20	140.35	138.70	134.60	132.00	133.55	137.25	9.10
	6.13	11.10	-1.29	-1.98	-0.58	-1.48	-1.99	-1.18	-2.96	-1.93	1.17	2.77	7.10
2020	139.10	136.70	134.45	131.00	131.70	137.95	140.90	146.15	143.80	152.95	167.05	160.95	23.70
	1.35	-1.73	-1.65	-2.57	0.53	4.75	2.14	3.73	-1.61	6.36	9.22	-3.65	17.27
2021	162.25	173.50	176.65	193.70	196.65	198.75	206.75	212.85	227.15	221.30	211.20	225.25	64.30
	0.81	6.93	1.82	9.65	1.52	1.07	4.03	2.95	6.72	-2.58	-4.56	6.65	39.95
2022	241.55	273.45	281.95	252.90	235.30	208.80	214.85	206.25					-19.00
	7.24	13.21	3.11	-10.30	-6.96	-11.26	2.90	-4.00					-8.44
Average	1.81	4.49	-2.17	3.36	-1.97	-0.44	0.51	2.99	-0.72	0.54	0.08	0.28	Average

# GENERAL DISCLAIMERS

KEDIA ADVISORY

This Report is prepared and distributed by Kedia Stocks & Commodities Research Pvt Ltd. for information purposes only. The recommendations, if any, made herein are expression of views and/or opinions and should not be deemed or construed to be neither advice for the purpose of purchase or sale through KSCRPL nor any solicitation or offering of any investment /trading opportunity. These information / opinions / views are not meant to serve as a professional investment guide for the readers. No action is solicited based upon the information provided herein. Recipients of this Report should rely on information/data arising out of their own investigations. Readers are advised to seek independent professional advice and arrive at an informed trading/investment decision before executing any trades or making any investments. This Report has been prepared on the basis of publicly available information, internally developed data and other sources believed by KSCRPL to be reliable. KSCRPL or its directors, employees, affiliates or representatives do not assume any responsibility for, or warrant the accuracy, completeness, adequacy and reliability of such information / opinions / views. While due care has been taken to ensure that the disclosures and opinions given are fair and reasonable, none of the directors, employees, affiliates or representatives of KSCRPL shall be liable for any direct, indirect, special, incidental, consequential, punitive or exemplary damages, including lost profits arising in any way whatsoever from the information / opinions / views contained in this Report. The possession, circulation and/or distribution of this Report may be restricted or regulated in certain jurisdictions by appropriate laws. No action has been or will be taken by KSCRPL in any jurisdiction (other than India), where any action for such purpose(s) is required. Accordingly, this Report shall not be possessed, circulated and/ or distributed in any such country or jurisdiction unless such action is in compliance with all applicable laws and regulations of such country or jurisdiction. KSCRPL requires such recipient to inform himself about and to observe any restrictions at his own expense, without any liability to KSCRPL. Any dispute arising out of this Report shall be subject to the exclusive jurisdiction of the Courts in India.

For more details, please **contact:**

 +91 9323406035 / 9619551022

 [info@kediaadvisory.com](mailto:info@kediaadvisory.com)

 [www.kediaadvisory.com](http://www.kediaadvisory.com)

KEDIA STOCKS & COMMODITIES RESEARCH PVT LTD.  
Mumbai, IN.

SEBI REGISTRATION NUMBER - INH000006156

