



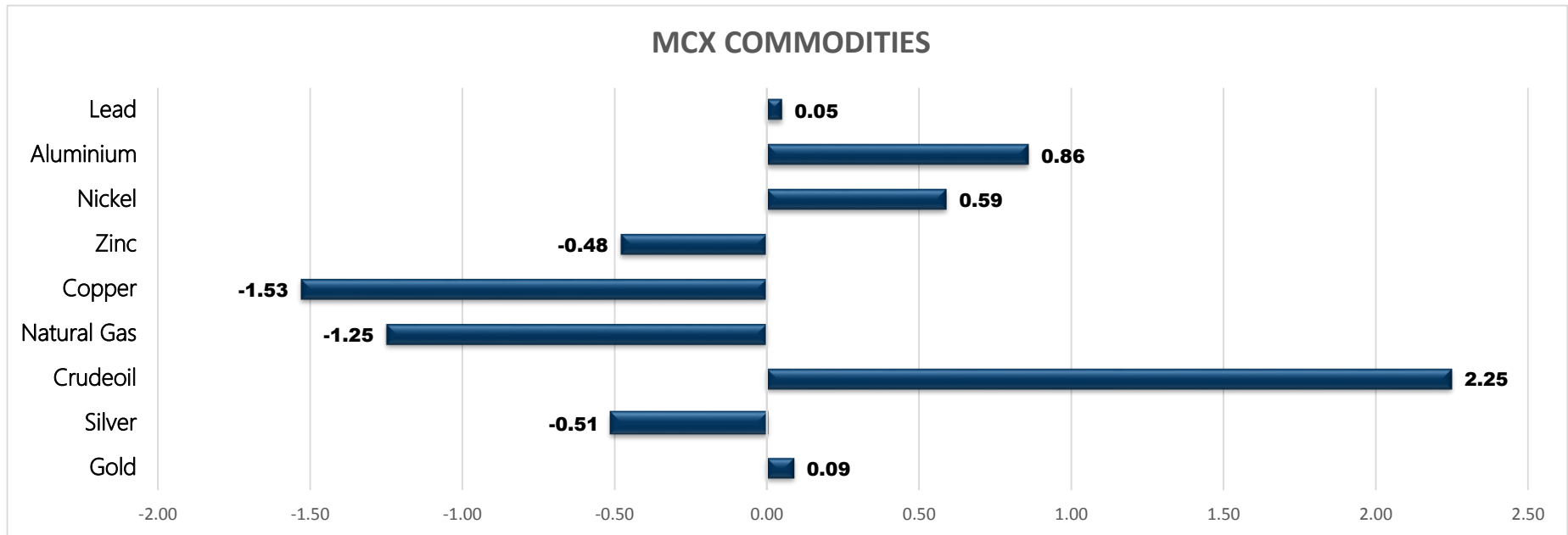
BULLION

- Gold
- Silver

Commodity	Closed	% Change
Gold	47778.00	0.09
Silver	61603.00	-0.51
Crudeoil	6218.00	2.25
Natural Gas	316.10	-1.25
Copper	742.20	-1.53
Zinc	288.20	-0.48
Nickel	1631.50	0.59
Aluminium	235.05	0.86
Lead	189.95	0.05

Commodity	Ltp*	% Change
Gold\$	1817.16	-0.01
Silver\$	22.89	-0.21
Crudeoil\$	83.82	2.07
Natural Gas\$	4.26	-0.19
Lme Copper	9731.50	0.00
Lme Zinc	3519.00	-0.47
Lme Nickel	21960.00	-1.19
Lme Lead	2367.50	-0.29
Lme Aluminium	2974.00	-0.44

Economical Data	
EUR	Eurogroup Meetings
EUR	German Buba Monthly Report
USD	Bank Holiday



MCX MARKET SYNOPSIS

Contract	Open	High	Low	Close	Rs Chg	% Chg	Volume	OI	OI % Chg
Gold Feb	47841.00	47993.00	47756.00	47778.00	42.00	0.09	4284	6044	-4.50
Gold Apr	47963.00	48134.00	47862.00	47886.00	43.00	0.09	1104	7017	5.77

Contract	Open	High	Low	Close	Rs Chg	% Chg	Volume	OI	OI % Chg
Silver Mar	61911.00	62385.00	61501.00	61603.00	-317.00	-0.51	13053	12980	4.06
Silver May	62663.00	62950.00	62175.00	62261.00	-313.00	-0.50	343	538	-4.10

MCX PIVOT

Contract	Sup - 3	Sup - 2	Sup - 1	Pivot	Res - 1	Res - 2	Res - 3	OI Status
Gold Feb	47454.00	47605.00	47691.00	47842.00	47928.00	48079.00	48165.00	Short Covering
Silver Mar	60391.00	60946.00	61275.00	61830.00	62159.00	62714.00	63043.00	Fresh Selling

SPREAD SYNOPSIS

Gold					Silver				Spread History				
Month	Rate	Feb	Apr	Jun	Month	Rate	Mar	May	Jul	Commodity	Max	Min	Avg
Feb	47778		108.00	364.00	Mar	61603		658.00	1305.00	Gold	585.00	-20.00	253.00
Apr	47886			256.00	May	62261			647.00	Silver	1400.00	588.00	1060.00
Jun	48142				Jul	62908							

INTERNATIONAL MARKET SYNOPSIS

Gold Last 4 Day Movement								Pivot		
Date	Open	High	Low	Close	Chg	% Chg		Res - 1	Res - 2	Res - 3
14-Jan-22	1822.46	1828.42	1814.87	1817.19	-5.28	-0.29%		1825.45	1833.71	1839.00
13-Jan-22	1825.99	1827.58	1813.22	1822.47	-3.53	-0.19%		Sup - 1	Sup - 2	Sup - 3
12-Jan-22	1821.39	1827.70	1815.10	1826.00	4.62	0.25%		1811.90	1806.61	1798.35
11-Jan-22	1801.54	1822.84	1800.16	1821.38	19.83	1.10%				

Silver Last 4 Day Movement								Pivot		
Date	Open	High	Low	Close	Chg	% Chg		Res - 1	Res - 2	Res - 3
14-Jan-22	23.077	23.241	22.834	22.957	-0.120	-0.52%		23.19	23.42	23.59
13-Jan-22	23.133	23.228	23.009	23.077	-0.057	-0.25%		Sup - 1	Sup - 2	Sup - 3
12-Jan-22	22.774	23.196	22.654	23.134	0.360	1.58%		22.78	22.60	22.37
11-Jan-22	22.453	22.784	22.432	22.774	0.321	1.43%				

GOLD

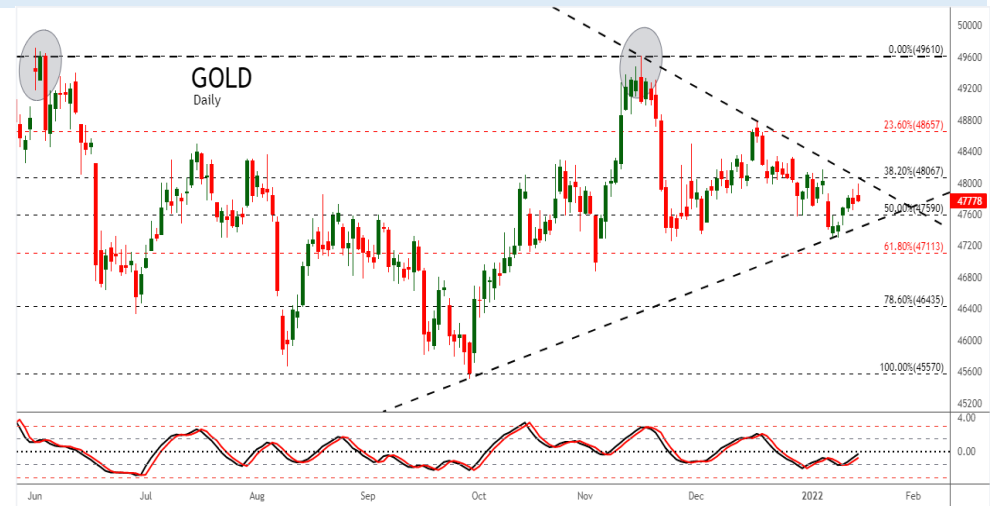
Gold trading range for the day is 47605-48079.

Gold gained as the dollar fell to its lowest in more than two months and the benchmark U.S. 10-year Treasury yields dipped.

Fed Governor Brainard became the latest official to signal the central bank will start raising interest rates in March to battle inflation.

Federal Reserve policymakers signalled they will start raising U.S. interest rates in March to fight inflation.

Physical gold buying faltered in India as prices climbed and rising coronavirus cases prompted consumers to postpone purchases



SILVER

Silver trading range for the day is 60946-62714.

Silver prices slipped weighed down by an uptick in Treasury yields on prospects of U.S. interest rate hikes

Fed chair Powell acknowledged recently that rate hikes and tighter policy will be needed to control inflation

Fed policymakers signaled they will start raising U.S. interest rates in March to battle inflation that's eroding the value of workers' recent wage gains

Data showed retail sales tumbled by 1.9% in December as Americans struggled with shortages of goods due to supply chain bottlenecks



BULLION SPOT MARKET SYNOPSIS

Gold Spot 995		
Exch.	Descr.	Ltp*
CMDTY	Gold 995 - Ahmedabad	49310.00
CMDTY	Gold 995 - Bangalore	49380.00
CMDTY	Gold 995 - Chennai	49430.00
CMDTY	Gold 995 - Cochin	49435.00
CMDTY	Gold 995 - Delhi	49290.00
CMDTY	Gold 995 - Hyderabad	49385.00
CMDTY	Gold 995 - Jaipur	49260.00
CMDTY	Gold 995 - Kolkata	49380.00
CMDTY	Gold 995 - Mumbai	49370.00

* Rates including GST

Gold Spot 999		
Exch.	Descr.	Ltp*
CMDTY	Gold 999 - Ahmedabad	49440.00
CMDTY	Gold 999 - Bangalore	49530.00
CMDTY	Gold 999 - Chennai	49580.00
CMDTY	Gold 999 - Cochin	49585.00
CMDTY	Gold 999 - Delhi	49440.00
CMDTY	Gold 999 - Hyderabad	49390.00
CMDTY	Gold 999 - Jaipur	49390.00
CMDTY	Gold 999 - Mumbai	49520.00

* Rates including GST

Silver Spot 999		
Exch.	Descr.	Ltp*
CMDTY	Silver 999 - Ahmedabad	63280.00
CMDTY	Silver 999 - Bangalore	63075.00
CMDTY	Silver 999 - Chennai	63020.00
CMDTY	Silver 999 - Delhi	63295.00
CMDTY	Silver 999 - Hyderabad	63120.00
CMDTY	Silver 999 - Jaipur	63230.00
CMDTY	Silver 999 - Kolkata	63400.00
CMDTY	Silver 999 - Mumbai	63320.00

* Rates including GST

Gold and Silver Fix		
Exch.	Descr.	Ltp*
CMDTY	Gold London AM FIX	1822.40
CMDTY	Gold London PM FIX	1820.35
CMDTY	Silver London FIX	23.24

Gold and Silver Ratio		
Exch.	Descr.	Ltp*
Intl Spot	GOLD SILVER RATIO	79.37
MCX	GOLD SILVER RATIO	77.56

SPOT Vs MCX SPREAD			
Silver 999	Spread	Gold 999	Spread
Ahmedabad - Mcx Silver	1677.00	Ahmedabad - Mcx G	1662.00
Bangalore - Mcx Silver	1472.00	Bangalore - Mcx Gol	1752.00
Chennai - Mcx Silver	1417.00	Chennai - Mcx Gold	1802.00
Delhi - Mcx Silver	1692.00	Cochin - Mcx Gold	1807.00
Hyderabad - Mcx Silver	1517.00	Delhi - Mcx Gold	1662.00
Jaipur - Mcx Silver	1627.00	Hyderabad - Mcx Gc	1612.00
Kolkata - Mcx Silver	1797.00	Jaipur - Mcx Gold	1612.00
Mumbai - Mcx Silver	1717.00	Mumbai - Mcx Gold	1742.00

GOLD PRICE MOVEMENT SINCE 2012

Year	JAN	FEB	MAR	APR	MAY	JUN	JUL	AUG	SEP	OCT	NOV	DEC	Grow th
2012	28078	27952	28518	29283	29248	29665	29749	31206	31535	31105	31076	30859	3530.00
	2.74	-0.45	2.02	2.68	-0.12	1.43	0.28	4.90	1.05	-1.36	-0.09	-0.70	12.92
2013	29871	29570	29394	26905	26874	25669	28207	35074	29874	29793	29234	28364	-2495.00
	-3.20	-1.01	-0.60	-8.47	-0.12	-4.48	9.89	24.35	-14.83	-0.27	-1.88	-2.98	-8.09
2014	29462	30090	28536	28887	26863	27776	27818	27996	26313	25881	25835	26703	-1661.00
	3.87	2.13	-5.16	1.23	-7.01	3.40	0.15	0.64	-6.01	-1.64	-0.18	3.36	-5.86
2015	27895	26477	26204	26716	26860	26471	24813	26682	25856	26499	25069	24931	-1772.00
	4.46	-5.08	-1.03	1.95	0.54	-1.45	-6.26	7.53	-3.10	2.49	-5.40	-0.55	-6.64
2016	26638	29513	28549	30266	28627	31199	31549	30724	30742	29950	28385	27445	2514.00
	6.85	10.79	-3.27	6.01	-5.42	8.98	1.12	-2.61	0.06	-2.58	-5.23	-3.31	10.08
2017	28942	29566	28463	28873	28843	28439	28557	29745	29557	29253	29012	29000	1555.00
	5.45	2.16	-3.73	1.44	-0.10	-1.40	0.41	4.16	-0.63	-1.03	-0.82	-0.04	5.67
2018	30117	30379	30408	31036	30831	30432	29653	30129	30481	31748	30240	31392	2392.00
	3.85	0.87	0.10	2.07	-0.66	-1.29	-2.56	1.61	1.17	4.16	-4.75	3.81	8.25
2019	33096	33286	31998	31756	32266	34206	35420	38805	37323	38578	38031	39208	7816.00
	5.43	0.57	-3.87	-0.76	1.61	6.01	3.55	9.56	-3.82	3.36	-1.42	3.09	24.90
2020	41000	41397	43000	44906	46654	48762	53445	51701	50334	50699	47918	50151	10943.00
	4.57	0.97	3.87	4.43	3.89	4.52	9.60	-3.26	-2.64	0.73	-5.49	4.66	27.91
2021	49096	45736	44935	46737	49349	46839	48001	47120	46521	47635	47805	48099	-2052.00
	-2.10	-6.84	-1.75	4.01	5.59	-5.09	2.48	-1.84	-1.27	2.39	0.36	0.61	-4.09
Average	2.09	1.06	-1.45	2.50	0.32	0.90	1.56	5.88	-2.95	1.29	-1.24	0.24	Average

SILVER PRICE MOVEMENT SINCE 2012

Year	JAN	FEB	MAR	APR	MAY	JUN	JUL	AUG	SEP	OCT	NOV	DEC	Growth
2012	56422	57783	56790	56482	54110	51987	53974	58408	62780	59881	61185	57864	6835.00
	10.57	2.41	-1.72	-0.54	-4.20	-3.92	3.82	8.22	7.49	-4.62	2.18	-5.43	13.39
2013	57849	53267	53072	44833	43616	40208	41520	53212	49248	48431	44274	43833	-14031.00
	-0.03	-7.92	-0.37	-15.52	-2.71	-7.81	3.26	28.16	-7.45	-1.66	-8.58	-1.00	-24.25
2014	43309	46362	42805	41329	40851	44114	44399	42255	38516	35797	34527	35990	-7843.00
	-1.20	7.05	-7.67	-3.45	-1.16	7.99	0.65	-4.83	-8.85	-7.06	-3.55	4.24	-17.89
2015	38105	36716	37169	36415	38349	35536	34025	34581	34547	36490	33480	33299	-2691.00
	5.88	-3.65	1.23	-2.03	5.31	-7.34	-4.25	1.63	-0.10	5.62	-8.25	-0.54	-7.48
2016	34750	36081	36751	41566	38400	43467	47480	43988	45726	42402	40089	39485	6186.00
	4.36	3.83	1.86	13.10	-7.62	13.20	9.23	-7.35	3.95	-7.27	-5.45	-1.51	18.58
2017	41921	43247	42326	39503	40096	38344	38645	39798	39457	38818	37532	39000	-485.00
	6.17	3.16	-2.13	-6.67	1.50	-4.37	0.78	2.98	-0.86	-1.62	-3.31	3.91	-1.23
2018	39319	38246	38322	38642	39904	39228	38321	37482	38577	38050	36025	38821	-179.00
	0.82	-2.73	0.20	0.84	3.27	-1.69	-2.31	-2.19	2.92	-1.37	-5.32	7.76	-0.46
2019	40439	39760	37761	37714	36449	37452	41227	46776	44119	46764	44506	46711	7890.00
	4.17	-1.68	-5.03	-0.12	-3.35	2.75	10.08	13.46	-5.68	6.00	-4.83	4.95	20.32
2020	46989	43979	39520	41390	50118	50364	64984	70437	59919	60865	60222	68105	21394.00
	0.60	-6.41	-10.14	4.73	21.09	0.49	29.03	8.39	-14.93	1.58	-1.06	13.09	45.80
2021	69706	67261	63814	68366	71898	69074	67847	63366	59617	64534	62287	62660	-5445.00
	2.35	-3.51	-5.12	7.13	5.17	-3.93	-1.78	-6.60	-5.92	8.25	-3.48	0.60	-8.00
Average	1.95	0.49	-1.01	2.38	0.25	-1.30	5.07	4.89	-3.59	1.74	-2.28	2.12	Average

GENERAL DISCLAIMERS

KEDIA ADVISORY

This Report is prepared and distributed by Kedia Stocks & Commodities Research Pvt Ltd. for information purposes only. The recommendations, if any, made herein are expression of views and/or opinions and should not be deemed or construed to be neither advice for the purpose of purchase or sale through KSCRPL nor any solicitation or offering of any investment /trading opportunity. These information / opinions / views are not meant to serve as a professional investment guide for the readers. No action is solicited based upon the information provided herein. Recipients of this Report should rely on information/data arising out of their own investigations. Readers are advised to seek independent professional advice and arrive at an informed trading/investment decision before executing any trades or making any investments. This Report has been prepared on the basis of publicly available information, internally developed data and other sources believed by KSCRPL to be reliable. KSCRPL or its directors, employees, affiliates or representatives do not assume any responsibility for, or warrant the accuracy, completeness, adequacy and reliability of such information / opinions / views. While due care has been taken to ensure that the disclosures and opinions given are fair and reasonable, none of the directors, employees, affiliates or representatives of KSCRPL shall be liable for any direct, indirect, special, incidental, consequential, punitive or exemplary damages, including lost profits arising in any way whatsoever from the information / opinions / views contained in this Report. The possession, circulation and/or distribution of this Report may be restricted or regulated in certain jurisdictions by appropriate laws. No action has been or will be taken by KSCRPL in any jurisdiction (other than India), where any action for such purpose(s) is required. Accordingly, this Report shall not be possessed, circulated and/ or distributed in any such country or jurisdiction unless such action is in compliance with all applicable laws and regulations of such country or jurisdiction. KSCRPL requires such recipient to inform himself about and to observe any restrictions at his own expense, without any liability to KSCRPL. Any dispute arising out of this Report shall be subject to the exclusive jurisdiction of the Courts in India.

For more details, please **contact:**

 +91 9323406035 / 9619551022

 info@kediaadvisory.com

 www.kediaadvisory.com

KEDIA STOCKS & COMMODITIES RESEARCH PVT LTD.
Mumbai, IN.

SEBI REGISTRATION NUMBER - INH000006156

