



**GEOJIT**

PEOPLE YOU PROSPER WITH

# AGRI PICKS

*A Daily Report on Agricultural Commodities*

Monday, April 19, 2021

TODAY'S PICKS

## AGRI BUZZ

- After excessive rainfall during the last southwest monsoon season, India is likely to receive 'normal' monsoon rains in 2021 with rainfall seen at 98% of the long-period average, the India Meteorological Department said.
- The Securities and Exchange Board of India listed warehousing norms for commodity contracts of agricultural goods and base metals. These norms for clearing corporations and warehouse service providers will be effective from Jun 1.
- Minister of State for Agriculture Parshottam Rupala said private investment in farm sector is required to double farmers' income by 2022.
- The Solvent Extractors' Association of India today requested the Securities and Exchange Board of India to check speculative trading in soybean futures.
- National Commodity Clearing Ltd, the clearing arm of the National Commodity and Derivatives Exchange, has so far marked 12,960 tn chana and 6,310 tn soybean for staggered delivery against the April contract that will expire on Tuesday, according to data on its website.
- Production of most crops in Karnataka are expected to increase in the 2020-21 (Jul-Jun) season as adequate rain in the state led to a rise in acreage of most crops and boosted yields, a senior state government official told Informist.
- Farmers in the country have sown summer crops across 6.98 mln ha so far in 2020-21 (Jul-Jun), up 16.6% from a year ago, farm ministry data showed.

	Futures	Spot
Contract/spot	JEERA - APR21	Unjha
Rate	14190	14054.55
% chg	1.47	-0.16
1 week low	13905	14019.05
1 week High	14255	14054.55
	Futures	Spot
Contract/spot	CHANA - APR21	Bikaner
Rate	5690	5800
% chg	0.09	2.62
1 week low	5472	5520
1 week High	5825	5800
	Futures	Spot
Contract/spot	SOYABEAN - APR21	Indore
Rate	7550	7369
% chg	3.16	2.04
1 week low	6860	7070
1 week High	7606	7369
	Futures	Spot
Contract/spot	CASTOR SEED - APR21	Deesa
Rate	5008	5250
% chg	3.3	2.47
1 week low	4768	4907
1 week High	5130	5262.5
	Futures	Spot
Contract/spot	RUBBER - MAY21	Kottayam
Rate	16995	16738
% chg	-0.23	-0.37
1 week low	16738	0
1 week High	16738	0

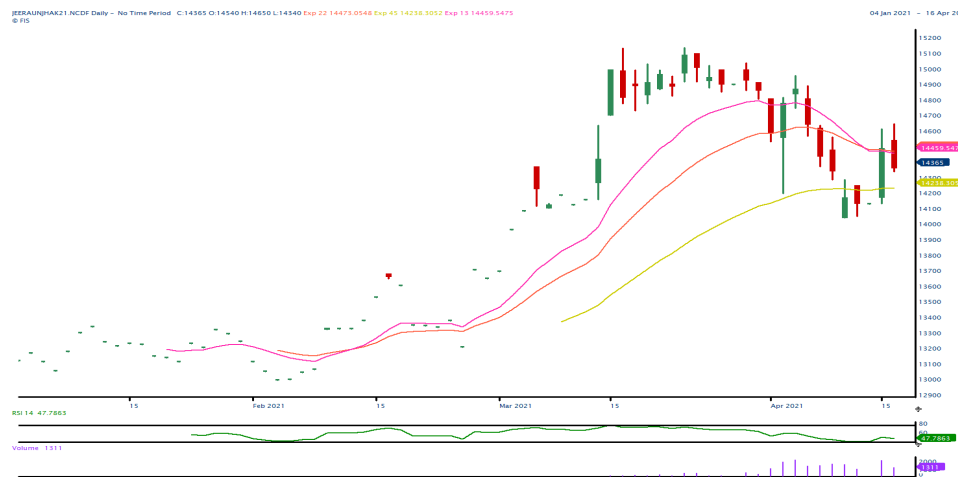
	Futures	Spot
Contract/spot	TURMERIC - APR21	Nizamabad
Rate	8046	7684.2
% chg	0.57	0.29
1 week low	7660	7661.75
1 week High	8150	7684.2
	Futures	Spot
Contract/spot	GUAR SEED10 - APR21	Jodhpur
Rate	3993	4204
% chg	2.38	1.71
1 week low	3870	3955
1 week High	4024	4204
	Futures	Spot
Contract/spot	REFINED SOYA OIL - APR21	Kandla
Rate	1401	1407.6
% chg	0.92	1.27
1 week low	1330	1348.65
1 week High	1408.3	1407.6
	Futures	Spot
Contract/spot	KAPAS - APR21	Rajkot
Rate	1306	1316.1
% chg	-0.38	-0.22
1 week low	1255	1316.1
1 week High	1318	1318
	Futures	Spot
Contract/spot	MAIZE - Feed/Industrial Grade	Gulabbagh
Rate	0	1512.5
% chg	0	0.83
1 week low	0	1497.5
1 week High	0	1512.5

	Futures	Spot
Contract/spot	CORIANDER - APR21	Kota
Rate	7142	7271.25
% chg	0	1.13
1 week low	7032	7167.85
1 week High	7186	7288.75
	Futures	Spot
Contract/spot	Guar Gum Refined Splits - APR21	Jodhpur
Rate	6250	6500
% chg	1.13	2.49
1 week low	5920	6107.5
1 week High	6400	6502.5
	Futures	Spot
Contract/spot	RAPE MUSTARD SEEDS - APR21	Jaipur
Rate	7025	7269.55
% chg	5.16	3.13
1 week low	6361	6524.25
1 week High	7080	7269.55
	Futures	Spot
Contract/spot	COTTON SEED OIL CAKE AKOLA - APR21	AKOLA
Rate	2754	2800
% chg	1.29	0.54
1 week low	2627	2756.45
1 week High	2754	2800
	Futures	Spot
Contract/spot	BARLEY - APR21	Jaipur
Rate	1878	0
% chg	0.97	0
1 week low	1860	0
1 week High	1918	0

SPICES COMPLEX

Market Buzz

- Jeera May futures on NCDEX declined on Friday on subdued demand, while spot market stayed shut.
- Traders at the Unjha Agricultural Produce Market Committee have decided to suspend operations for a week, from April 14 to 21, because of the resurgence in coronavirus cases.
- According to a survey conducted by the Federation of Indian Spice Stakeholders, jeera production in India is likely to be 478520 tons in 2020-21 (Oct-Sep), down by 11 per cent yoy.
- Government estimates 2020-21 jeera output at 887000 tons compared to 912000 tons a year ago.
- According to the second advance estimates released by the Gujarat’s farm department, production in jeera is expected to be at 373700 tonnes in 2020-21 compared to 375420 tonnes produced last year (2019-20).
- According to Gujarat’s farm department, as of 28 Dec2020, jeera has been sown across 464469 hectares in state, compared to 435657 hectares sown during the same period last year.
- Spices Board pegs Apr-Sep jeera exports at 153000 tonnes, up by 33 per cent on yoy basis.
- Coriander May futures on NCDEX declined on Friday on rise in arrivals in the spot market.
- Government sees 2020-21 coriander output at 720000 tons compared to 701000 tons a year ago.
- Coriander production in Gujarat is expected to rise 55 per cent to 216680 tonnes in 2020-21 season (Jul-Jun) due to sharp rise in acreage according to the state’s farm department’s second advance estimates.
- As of Dec 28, 2020 coriander has been sown across 135563 hectares compared to 76904 hectares sown during the same period last year showed the data from the Gujarat state farm department.
- According to Spices Board of India data, coriander exports for the Apr-Sep period this year is seen at 26750 tonnes, up by nine per cent on yoy basis.
- Turmeric May futures on NCDEX ticked up on Friday on dip in arrivals in the spot market.
- Government sees 2020-21 turmeric output at 1.11 million tonnes compared to 1.15 million tons a year ago.
- Government pegs 2020-21 cardamom output at 25000 tons compared to 21000 tons a year ago.



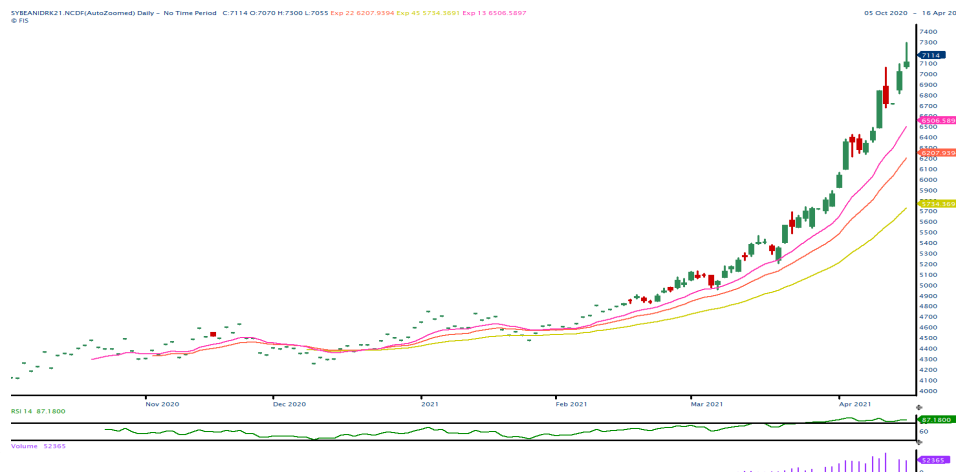
TECHNICAL VIEW

<p><b>JEERA NCDEX MAY</b></p>	<p>A voluminous rise above 14650 is required for continuation of upswing. Inability to clear the same may call for dips to 14260/14140.</p>	
<p><b>DHANIYA NCDEX MAY</b></p>	<p>Choppy to weak trades expected as long as 7300 caps upside. A voluminous rise above 7350 may call for 7430/7550.</p>	
<p><b>TURMERIC NCDEX MAY</b></p>	<p>Choppy to weak trades inside 8450-8000 ranges expected.</p>	
<p><b>CARDAMOM MCX MAY</b></p>	<p>Choppy trades expected.</p>	

## OILSEED COMPLEX

### Market Buzz

- All commodities in the oilseed basket rose yesterday. MCX Apr CPO prices traded higher tracking gains in BMD Malaysian palm oil prices on reports higher exports in Malaysia due to long one month Ramzan. May Soy oil prices hit all time high on positive cues from domestic soybean prices.
- NCDEX May soybean prices continued to trade higher and hit historical new high on back of strong demand for soymeal from exporters along with dwindling supplies. May NCDEX Mustard seed prices traded higher and hit all time high on due to robust demand from oil millers for mustard oil in the spot market.
- The National Commodity Clearing Ltd has raised the pre-expiry and lean period margin on soybean to three and four percent respectively in all contracts to check the excessive volatility of the prices in the near term.
- India's soymeal exports jumped nearly fourfold on year to 220,000 tn in March. The Soybean Processors Association of India data showed. In the same month a year ago, exports were at 58,000 tn. Overseas shipments of the oil meal rose significantly due to strong demand from France, Germany, the Netherlands, and Qatar, traders said. During Oct-Mar, exports jumped to 1.59 mln tn from 423,000 tn a year ago, SOPA data showed.
- Sri Lanka's decision to ban import of crude palm oil is unlikely to impact global prices, market experts said. Sri Lanka buys palm oil in small quantity and its decision to stop the import is unlikely to lead to a global glut.
- India's soymeal exports in March are expected to jump sixfold on year to nearly 200,000 tn, according to SEA.
- Crushing of mustard seeds rose 60% on year to 1.2 mln tn across the country in March, data from Marudhar Trading Agency showed. Mills had crushed 750,000 tn of the oilseed during the same period last year.
- India's 2020-21 (Jul-Jun) mustard output is seen rising to 22.6% on year to 8.95 mln tn, according to a joint survey by the Central Organisation for Oil Industry and Trade and the Mustard Oil Producers' Association.
- India's oilmeal exports surged threefold on year to 393,309 tn in February, as per data released by The Solvent Extractors' Association of India. For Apr-Feb, overall exports of oilmeal rose 49% on year to 3.36 mln tn.
- India's vegetable oil imports dropped nearly 25% on year to around 838,607 tn in February. The Solvent Extractors' Association of India said. During Nov-Feb, the country imported 4.39 mln tn of vegetable oil, down 3.7% from the year-ago period.
- The US Department of Agriculture has scaled up its estimate for global oilseed production for 2020-21 to 598.0 mln tn from 595.8 mln tn projected in March. The upward revision is due to higher soybean, rapeseed, and peanut production. The rise is, however, limited due to smaller palm kernel, sunflower seed, and cottonseed crops, the agency said. Global soybean output is estimated at 363.2 mln tn, up by 1.4 mln tn, mainly due to higher production in Brazil. Global soybean crush is estimated 2 mln tn lower at 96 mln tn largely because of a smaller crush in China. World soybean exports are estimated 1.2 mln tn higher at 170.9 mln tn due to robust shipments from Brazil, Russia, and the US. The agency has projected world soybean ending stocks 3.1 mln tn higher at 86.9 mln tn, as purchases from China and Brazil are seen rising. The agency maintained its estimate for soybean output in the US at nearly 112.6 mln tn for 2020-21.
- India is likely to produce around 10 mln tn of mustard in 2020-21 (Jul-Jun), up 35% from a year ago, due to higher acreage and favourable weather conditions, according to the Solvent Extractors' Association of India.
- The government has proposed agriculture infrastructure and development cess on key edible oils in the Union Budget for 2021-22 (Apr-Mar). In the case of crude palm oil, the cess would lead to rise in overall effective duty by 5.5 percentage points to 35.75%. No major changes is seen in effective crude soyoil duty and crude sunflower oil.
- Farmers in the country have sown mustard across 6.9 mln ha, up 10.6% on year, in 2020-21 (Jul-Jun) season so far, data from the farm ministry.
- Indian government slashed import duty of crude palm oil. The government cut import duty on crude palm oil by 10% to 27.5%, in the last week, to cool off soaring edible oil prices in domestic markets.
- The area under major kharif crops so far in 2020-21 (Jul-Jun) was at 111.7 mln ha, up nearly 5% from a year ago, farm ministry data showed. The area under soybean across the country rose 6.4% on year to 12.12 mln ha as of 24th Sep, according to data from the farm ministry. The Union Cabinet approved a hike in minimum support price for 14 major kharif crops. MSP for soybean hiked by Rs.170 to 3880 from 3710 per 100 kg. Soybean output is estimated at 12.2 mln tn in 2019-20, according to the farm ministry's fourth advance estimate.
- India is likely to grow a record 10 mln tn mustard crop in 2020-21 (Jul-Jun), mainly due to the likelihood of a sharp rise in acreage, according to Solvent Extractors' Association of India. The government has targeted an all-time high crop of 12.5 mln tn for this rabi season. The government has fixed the minimum support price at 4,650 rupees per 100 kg for 2020-21 (Apr-Mar) marketing season against 4,425 rupees per 100 kg the previous year.
- According to the first advance estimates for 2020-21 (Jul-Jun), castor seed output is seen at 1.7 mln tn compared with 1.8 mln tn in the fourth advance estimates for 2019-20, according to the data released by the farm ministry. While, according to traders, crop is seen at 1.5-1.6 mln tn. Farmers have sown castor seed across 792,000 ha in 2020-21 (Jul-Jun), down 16% from a year ago.
- India's castor oil exports fell 5.2% on year to 43,516 tn in February, according to data from Solvent Extractors' Association of India. A year ago, exports were at 45,900 tn.
- Malaysia's crude palm oil output rose 28.4% on month to 1.4 mln tn in March, data from Malaysian Palm Oil Board showed. Total palm oil stocks in the country increased 10.7% on month to 1.4 mln tn. Exports of palm oil in March jumped up 31.8% on month to nearly 1.2 tn. Export of biodiesel fell over 50.9% on month to 13,839 tn.
- According to private cargo surveyor Amspec Agri, palm oil exports for Apr 1-15 was at 585,510 tn, up 13% on month.



### TECHNICAL VIEW

<b>SOYBEAN NCDEX MAY</b>	Major sentiments seems to be positive and expect to see more upside moves targeting 7300 levels. However, daily RSI (14) is at overbought situation and hence intermittent profit booking cannot be ruled out.	
<b>REF SOY OIL NCDEX MAY</b>	As prices broke the support of 1322 could see more upside moves targeting 375/1380 levels.	
<b>RMSEED NCDEX MAY</b>	Positive momentum is more likely to see further towards 7000 levels. However, expect severe volatility due to profit booking.	
<b>CASTOR NCDEX APR</b>	Though profit booking witnessed yesterday, successful trades above 5060 could see more upside moves targeting 5200/5260 levels.	
<b>CPO MCX APR</b>	As long as prices stays above 1160 could see more upside moves targeting 1180/1185 levels.	




## COTTON COMPLEX

### Market Buzz

- The Cotton Association of India has maintained its export estimate for the ongoing 2020-21 (Oct-Sep) season at 6.0 mln bales (1 bale = 170 kg). In the current marketing year, India has shipped around 4.3 mln bales till March, the association said in a release. The association has also maintained its estimate for ending stocks at 10.6 mln bales. Domestic consumption is seen at 33.0 mln bales in 2020-21, while imports are seen marginally lower at 1.1 mln bales against 1.2 mln bales estimated a month ago. The association has raised its production estimate for the year marginally to 36.0 mln bales, against 35.9 mln bales a month ago. Of the total crop, around 32.7 mln bales have arrived in markets across India till March.
- The US Department of Agriculture has scaled down the global cotton ending stock estimate for 2020-21 (Aug-Jul) to 93.5 mln bales (1 US bale = 218 kg) from 94.6 mln bales pegged in March. The downward revision in stocks is mainly due to lower production and higher consumption estimates. Smaller crop in Australia and rising domestic textile demand in China led to a fall in ending stocks. The US Department of Agriculture has marginally scaled down its global cotton production estimate for 2020-21 to 113.0 mln bales compared with 113.3 mln bales a month ago. Global cotton consumption is seen marginally higher at 117.9 mln bales, compared with 117.5 mln bales. Exports are now seen at 45.5 mln bales, compared with 44.5 mln bales. The agency, in its report for April, has maintained India's cotton ending stock estimate for 2020-21 at 17.4 mln bales. India is expected to export 5.7 mln bales of cotton during the year. Production and domestic consumption estimate for India have been maintained at 29.0 mln bales and 24.3 mln bales, respectively. The average price for the US upland cotton is expected to decline by 1 cent to 68 cents a pound during the current season, the agency said.
- The International Cotton Advisory Committee has scaled up its forecast for global prices in 2020-21 (Aug-Jul), as ending stocks for the ongoing season are estimated to be lower. The committee has revised upwards its price forecast for Cotlook A index, a global benchmark for prices of raw cotton, by 3 cents from the previous month to 79 cents per pound. Lower stock levels provide additional support for prices which have increased over the course of the current season supported by falling production and rising consumption. Global ending stocks for the season are estimated at 20.9 mln tn, compared with 21.4 mln tn in the previous season. Global production for the ongoing season is estimated at 24.1 mln tn, down 8% from the previous season. The fall has largely been attributed to a smaller crop in the US, Brazil, and Pakistan. Production in India, is expected at 6.3 mln tn, compared with 6.2 mln tn in the previous year. In the US, cotton production is estimated at 3.2 mln tn, against 4.3 mln tn a year ago. The committee has estimated global consumption at 24.5 mln tn, compared with 22.8 mln tn last year as manufacturing activity continues to show signs of recovery. Global exports are seen higher at 9.5 mln tn, compared with 9.0 mln tn a year ago.
- The UK-based Cotton Outlook has marginally lowered its estimate for global output in 2020-21 (Aug-Jul) by 85,000 tn to 24 mln tn in its March report. The estimate has been scaled down largely because production is expected to be lower in India and the US. Output is seen higher at 6.3 mln tn in China. For the current season, the agency has lowered its crop estimate for India, the largest producer, to 6.1 mln tn from 6.2 mln tn projected a month ago. Production in the US is seen at 3.2 mln tn. Global cotton consumption in 2020-21 is seen at 24.9 mln tn, against the 24.5 mln tn projected in the previous month. Consumption is seen marginally higher on likely rise in demand from the Indian subcontinent, China and Turkey. As textile supply chains have recovered following the most acute phase of the COVID-related disruption, many spinners have enjoyed good profits and some have been adding new capacity. Ending stocks of the fibre for 2020-21 are seen at 814,000 tn, against 417,000 tn projected last month.
- In the Union Budget for 2021-22 (Apr-Mar), Finance Minister Nirmala Sitharaman proposed customs duty of 5% on cotton and 10% on cotton waste. She also proposed an Agriculture Infrastructure and Development Cess of 5% on cotton, taking the overall customs duty to 10%. Customs duty on raw silk and silk yarn or yarn spun from silk waste has been increased to 15% from 10% earlier.
- The area under major kharif crops so far in 2020-21 (Jul-Jun) was at 111.7 mln ha, up nearly 5% from a year ago, farm ministry data showed. Farmers have sown cotton across 13.04 mln ha in the 2020-21 (Jul-Jun) season, up by 2.1% from a year ago, as of 25th Sept., farm ministry.
- India's cotton output in the 2020-21 (Oct-Sep) marketing year is seen at 38.0 mln bales (1 bale = 170 kg), up 4% on year, according to traders' pegs 2020-21 cotton crop at 37.1 mln bales vs 35.5 mln bales.
- Govt cuts 2019-20 cotton output view to 35.5 mln bales vs 36.0 mln. The government has raised the support price of medium staple cotton by 260 rupees per 100 kg to 5,515 rupees, and that of long staple by 275 rupees to 5,825 rupees.



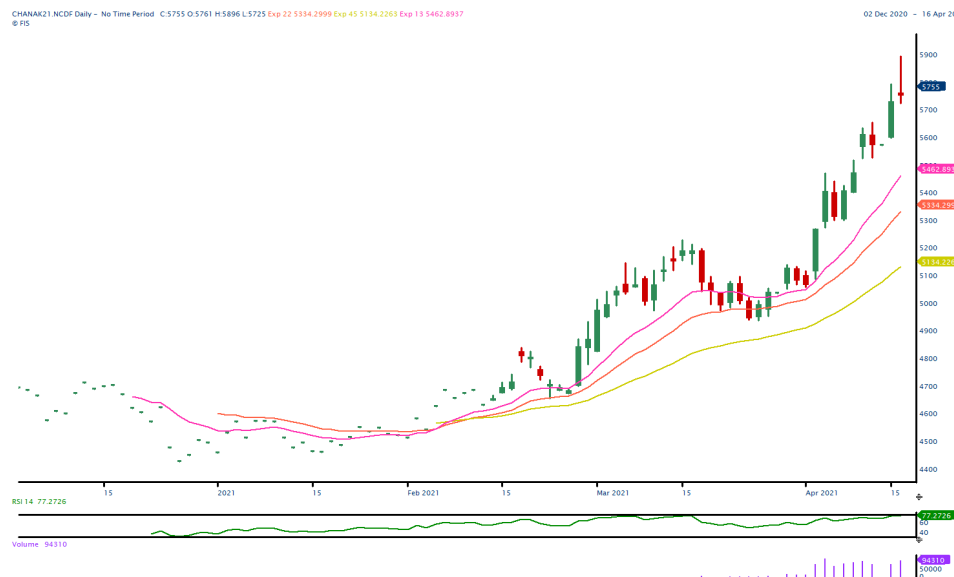
TECHNICAL VIEW

<p><b>AGRIDEX NCDEX</b></p>	<p>If prices sustain to trade above 1460 could continue upside moves targeting 1480/1500 levels. Else, could see profit booking for the day.</p>	
<p><b>KAPAS NCDEX APR22</b></p>	<p>Choppy trading session for the day</p>	
<p><b>COTTON MCX APR</b></p>	<p>Expect to see sideways price action for the day.</p>	
<p><b>COCUDAKL NCDEX MAY</b></p>	<p>Major sentiments seems to be positive and successful trades above 2750 could see more upside moves targeting 2800/2840 levels.</p>	





OTHERS

Market Buzz

- Chana May futures on NCDEX shot up to four year high on Friday on worries over supply due to restrictions with surge in coronavirus cases. Also, firm demand lend support.
- Govt. aims to increase chana procurement by nearly 55 per cent to 3.25 million tonnes in the marketing year 2021-22 beginning April, under the price support scheme.
- Procurement of chana under the price support scheme has more than doubled 124130 tons in less than 10 days according to government officials.
- The government has procured 58819 tn of chana, harvested in 2020-21 (Jul-Jun), from farmers at the minimum support price as of March 22.
- Rajasthan government will start procurement of chana and mustard from farmers at the minimum support price from April 1. Around 614900 tons of chana and 1.2 million ton mustard will be procured from the farmers.
- The government has approved procurement of 14350 tons of chana Bihar during 2021-22 rabi marketing season.
- The farm ministry has approved the procurement of 61000 tonnes of chana from Maharashtra in 2021-21 under the price support scheme according to the NAFED.
- The farm ministry has approved the procurement of 51325 tonnes of chana from Telangana in 2021-21 under the price support scheme according to the NAFED.
- Farm Commissioner expects 2020-21 chana output to be at 11.5 million tonnes compared to 11.4 million tonnes a year ago.
- India's guar gum exports improved in the month of December 2020 by 32% to 17,644 tonnes compared to 13,414 tonnes during November 2020 at an average FoB of US \$ 1849 per tonne in the month of December compared to US \$ 1611 per tonne in the month of November 2020. However, the gum shipments were down -1% in December 2020 compared to the same period last year. Of the total exported quantity, around 4,914 tonnes is bought US, Russia (3,290 tonnes) and Germany (2,432 tonnes).
- India's guar split exports fell in the month of December 2020 by -39% to 2,800 tonnes compared to 4,557 tonnes during November 2020 at an average FoB of US \$ 955 per tonne in the month of December compared to US \$ 1,390 per tonne in the month of November 2020. Further, the guar split shipments were up +32% in December 2020 compared to the same period last year. Of the total exported quantity, around 1,880 tonnes is bought China, US (800 tonnes) and Switzerland (120 tonnes).
- MCX rubber futures declined on Friday on concerns over demand following surge in coronavirus cases. However, thin supplied due to lean production phase lend support.
- Based on the preliminary estimates, the outlook of world production of natural rubber (NR) is likely to fall 12.4%, year-on-year, to 897,000 tonnes in February 2021. While the world consumption of natural rubber is estimated to recover at 47.5%, year-on-year, to 1.103 million tonnes during the same month too.



TECHNICAL VIEW

<p><b>CHANA NCDEX MAY</b></p>	<p>While there prevails positive bias, profit booking being witnessed may continue towards on a fall past 5700 ranges.</p>	
<p><b>GUARSEED NCDEX MAY</b></p>	<p>Profit booking may continue towards 4100-4050 before bouncing back. However, sustained trades below 4050 may lessen the prevailing positive bias.</p>	
<p><b>GUARGUM NCDEX MAY</b></p>	<p>Corrective dips to 6300-6200 ranges may not be ruled out before bouncing back.</p>	
<p><b>RUBBER MCX APR</b></p>	<p>A rise above 16800 or a fall past 16380 may probably set fresh directions for the day.</p>	

TECHNICAL LEVELS

Commodity	Contract	Open*	High*	Low*	Close*	S3	S2	S1	Pivot	R1	R2	R3
<b>SPICES</b>												
Jeera	MayNCDEX	14540	14650	14340	14365	13943	14142	14253	14452	14563	14762	14873
Turmeric	MayNCDEX	8252	8420	8168	8210	7860	8014	8112	8266	8364	8518	8616
Cardamom	MayMCX	1450	1450	1450	1450	1450	1450	1450	1450	1450	1450	1450
Dhaniya	MayNCDEX	7208	7254	7034	7110	6791	6913	7011	7133	7231	7353	7451
Menthaoil	AprMCX	965.0	967.8	962.0	964.2	956	959	962	965	967	970	973
<b>PULSES</b>												
Chana	MayNCDEX	5761	5896	5725	5755	5517	5621	5688	5792	5859	5963	6030
Guarseed	MayNCDEX	4140	4267	4105	4129	3905	4005	4067	4167	4229	4329	4391
Guargum	MayNCDEX	6355	6564	6321	6390	6043	6182	6286	6425	6529	6668	6772
<b>OIL &amp; OIL SEEDS</b>												
Soybean	MayNCDEX	7070	7300	7055	7114	6768	6911	7013	7156	7258	7401	7503
RM seed	MayNCDEX	6922	7215	6868	6987	6485	6676	6832	7023	7179	7370	7526
CPO	AprMCX	1168.0	1174.5	1163.0	1172.6	1154	1159	1166	1170	1177	1182	1189
Soyoil	MayNCDEX	1359.0	1375.7	1359.0	1368.2	1343	1359	1360	1368	1376	1376	1393
Castor seed	MayNCDEX	5218	5320	5102	5142	4838	4970	5056	5188	5274	5406	5492
<b>CEREALS</b>												
Wheat	MayNCDEX	1907	1907	1907	1907	1907	1907	1907	1907	1907	1907	1907
Barley	MayNCDEX	1950	1997	1950	1969	1900	1925	1947	1972	1993	2018	2040
<b>OTHERS</b>												
Cocud^	MayNCDEX	2765	2825	2740	2766	2644	2692	2729	2777	2814	2862	2899
Kapas	Apr22 NCDEX	1236.0	1236.0	1230.0	1233.0	1224	1227	1230	1233	1236	1239	1242
Cotton	AprMCX	21770	21900	21380	21440	20727	21053	21247	21573	21767	22093	22287
Rubber	MayICEX	17000	17035	16970	16995	16900	16935	16965	17000	17030	17065	17095

Pivot Point: A predictive indicator of the market which is calculated as an average of significant prices from the performance of a market in the prior trading period. An open above the pivot point is generally considered bullish and vice versa.  
 S1, S2 & S3 are supports and R1, R2, and R3 are resistances from where a turnaround can be anticipated.  
 \*Open, High, Low and Close prices of previous trading day / ^ Cottonseed Oil Cake



Strong bias or bullish



Choppy or Sideways



Weak bias or bearish



Mild bullish bias



Mild bearish bias

### TRADING SIGNALS

Commodities	Intraday	Overall	Volatility		Short term		Medium term		Long term	
	View	View	1 day	Annualized	3 day EMA	5 day EMA	13 day EMA	22 day EMA	45 day EMA	60 day EMA
Pepper May ICEX	FLAT/CHOPPY	POSITIVE	0.86%	13.6%	FLAT	FLAT	POSITIVE	POSITIVE	POSITIVE	POSITIVE
Jeera May NCDEX	NEGATIVE	NEGATIVE	1.20%	19.1%	FLAT	NEGATIVE	NEGATIVE	NEGATIVE	NEGATIVE	POSITIVE
Turmeric May NCDEX	NEGATIVE	NEGATIVE	2.48%	39.4%	FLAT	NEGATIVE	NEGATIVE	NEGATIVE	NEGATIVE	POSITIVE
Cardamom May MCX	FLAT/CHOPPY	FLAT/CHOPPY	0.00%	0.0%	FLAT	FLAT	FLAT	FLAT	FLAT	FLAT
Dhaniya May NCDEX	NEGATIVE	NEGATIVE	1.52%	24.2%	FLAT	NEGATIVE	NEGATIVE	NEGATIVE	POSITIVE	POSITIVE
Chana May NCDEX	POSITIVE	POSITIVE	1.37%	21.8%	FLAT	POSITIVE	POSITIVE	POSITIVE	POSITIVE	POSITIVE
Guarseed10 May NCDEX	POSITIVE	POSITIVE	1.26%	20.0%	FLAT	POSITIVE	POSITIVE	POSITIVE	POSITIVE	NEGATIVE
Guargum May NCDEX	NEGATIVE	NEGATIVE	1.37%	21.8%	FLAT	NEGATIVE	NEGATIVE	POSITIVE	NEGATIVE	NEGATIVE
Soybean May NCDEX	POSITIVE	POSITIVE	1.81%	28.8%	FLAT	POSITIVE	POSITIVE	POSITIVE	POSITIVE	POSITIVE
Ref. Soyoil May NCDEX	POSITIVE	HIGHLY POSITIVE	1.71%	27.2%	POSITIVE	POSITIVE	POSITIVE	POSITIVE	POSITIVE	POSITIVE
RMseed May NCDEX	POSITIVE	POSITIVE	1.75%	27.7%	FLAT	POSITIVE	POSITIVE	POSITIVE	POSITIVE	POSITIVE
CPO Apr MCX	POSITIVE	HIGHLY POSITIVE	1.65%	26.2%	POSITIVE	POSITIVE	POSITIVE	POSITIVE	POSITIVE	POSITIVE
Castor May NCDEX	POSITIVE	POSITIVE	1.17%	18.6%	FLAT	POSITIVE	POSITIVE	POSITIVE	POSITIVE	POSITIVE
Kapas22 Apr NCDEX	NEGATIVE	NEGATIVE	#N/A	#N/A	FLAT	NEGATIVE	#N/A	#N/A	#N/A	#N/A
Cotton Apr MCX	POSITIVE	POSITIVE	1.05%	16.7%	POSITIVE	POSITIVE	POSITIVE	POSITIVE	NEGATIVE	NEGATIVE
Cocudakl May NCDEX	NEGATIVE	POSITIVE	1.52%	24.1%	FLAT	NEGATIVE	POSITIVE	POSITIVE	POSITIVE	POSITIVE
Wheat May NCDEX	POSITIVE	POSITIVE	0.84%	13.3%	FLAT	POSITIVE	POSITIVE	POSITIVE	POSITIVE	POSITIVE
Barley May NCDEX	POSITIVE	POSITIVE	1.28%	20.4%	FLAT	POSITIVE	POSITIVE	POSITIVE	POSITIVE	POSITIVE
Menthaoil Apr MCX	FLAT/CHOPPY	NEGATIVE	0.28%	4.4%	FLAT	FLAT	FLAT	POSITIVE	NEGATIVE	NEGATIVE
Rubber May ICEX	POSITIVE	POSITIVE	0.58%	9.1%	POSITIVE	POSITIVE	NEGATIVE	POSITIVE	POSITIVE	POSITIVE

Trading signals is prepared based on statistical analysis and is purely on technical indicators like exponential moving averages (EMAs), Relative strength Index (RSI) and stochastic, putting altogether provides an idea about intraday, short, medium and long term trend of the commodities. It also signals the risk of an investment in both agricultural and global commodities as well. Based on all listed indicators above, investors were able to fix a daily, near-term and long term trends. However, must be cautious especially for real-time intraday traders/jobbers.

**Trading Strategy based on EMA**

Trading strategies mentioned in the report is mainly based on 3, 5, 13, 22, 45 & 60 days exponential Moving Averages. 3 and 5 day EMA has taken for developing Intraday trading strategy, 13 days and 22 days EMA for Short term and Medium term, while 45,60 days EMA for Long term. Here, we use EMAs for POSITIVE and NEGATIVE signals. POSITIVE signal is formed when a short-term moving average (eg: 30 day) crosses from below a longer-term average (eg: 60 day), which is considered bullish. Likewise, NEGATIVE signal is formed when a short-term moving average (eg: 30 day) crosses from above a longer-term moving average (eg: 60 day), which is considered bearish.

**Intraday and Overall view** The section is consist of both Intraday and Overall view. The Intraday view is calculated by netting out of POSITIVES/NEGATIVES/FLAT signals formed in the short term trend. On the another part, Overall view is calculated by netting out number of POSITIVES/NEGATIVES/FLAT signals formed in the short, Medium and long term trend.

**Volatility** is a measure for dispersion of price of a financial instrument over a period of time by using Standard deviation and annualised actual volatility. Standard deviation is used to calculate one day volatility. Whereas, Annualized Actual Volatility (AAV) is measured as annualized standard deviation of the continuously compounded daily returns of the asset. Generally the thumb rule is that, higher the volatility higher the risk of the asset. See the table below the range risk ratings.

Annualised Volatility >	Risk %	Ratings	Risk %	Ratings	Risk %	Ratings	Risk %	Ratings	Risk %	Ratings
> 35%	> 35%	Very High risk	27 to 34%	High risk	20 to 26%	Moderate risk	11 to 19%	Low risk	1 to 10%	Very Low risk



**GENERAL DISCLOSURES & DISCLAIMERS:****CERTIFICATION,**

We, Vinod T P, Hareesh V and Anu V Pai, employee of Geojit Financial Services Limited (GFSL), author of this report, hereby certify that all the views expressed in this research report (report) reflect my/ our personal views about any or all of the subject issuer or securities/ commodities.

**DISCLAIMER**

This report has been prepared by GFSL and the report & its contents are the exclusive property of GFSL and the recipient cannot tamper with the report or its contents in any manner and the said report, shall in no case, be further distributed to any third party for commercial use, with or without consideration.

GFSL has taken steps to ensure that facts in this report are based on reliable information but cannot testify, nor make any representation or warranty, express or implied, to the accuracy, contents or data contained within this report. It is hereby confirmed that wherever GFSL has employed a rating system in this report, the rating system has been clearly defined including the time horizon and benchmarks on which the rating is based.

Descriptions of any Commodity or Commodities mentioned herein are not intended to be complete and this report is not, and should not be construed as an offer or solicitation of an offer, to buy or sell any commodity or other financial instruments. GFSL has not taken any steps to ensure that the commodity/(ies) referred to in this report are suitable for any particular investor. This Report is not to be relied upon in substitution for the exercise of independent judgment. Opinions or estimates expressed are current opinions as of the original publication date appearing on this Report and the information, including the opinions and estimates contained herein, are subject to change without notice. GFSL is under no duty to update this report from time to time.

**RISK DISCLOSURE**

Geojit Financial Services Limited and/or its Affiliates and its officers, directors and employees including the analyst/authors shall not be in any way be responsible for any loss or damage that may arise to any person from any inadvertent error in the information contained in this report. Investors may lose his/her entire investment under certain market conditions so before acting on any advice or recommendation in these material, investors should consider whether it is suitable for their particular circumstances and, if necessary, seek professional advice. This report does not take into account the specific investment objectives, financial situation/circumstances and the particular needs of any specific person who may receive this document. The user assumes the entire risk of any use made of this information. Each recipient of this report should make such investigation as it deems necessary to arrive at an independent evaluation of an investment in the Commodity/(ies) referred to in this report (including the merits and risks involved). The price, volume and income of the investments referred to in this report may fluctuate and investors may realize losses that may exceed their original capital.

The investments or services contained or referred to in this report may not be suitable for all equally and it is recommended that an independent investment advisor be consulted. In addition, nothing in this report constitutes investment, legal, accounting or tax advice or a representation that any investment or strategy is suitable or appropriate to individual circumstances or otherwise constitutes a personal recommendation of GFSL.

**REGULATORY DISCLOSURES:**

Geojit Financial Services Limited's Associates consists of companies such as Geojit Technologies Private Limited (GTPL- Software Solutions provider), Geojit Credits Private Limited (GCPL- NBFC Services provider), Geojit Investment Services Limited (GISL- Corporate Agent for Insurance products), Geojit Financial Management Services Private Limited (GFMSL) & Geojit Financial Distribution Private Limited (GFDPL), (Distributors of Insurance and MF Units). In the context of the SEBI Regulations on Research Analysts (2014), Geojit Financial Services Limited affirms that we are a SEBI registered Research Entity and we issue research reports /research analysis etc that are prepared by our Research Analysts. We also affirm and undertake that no disciplinary action has been taken against us or our Analysts in connection with our business activities.

In compliance with the above mentioned SEBI Regulations, the following additional disclosures are also provided which may be considered by the reader before making an investment decision:

**1. Disclosures regarding Ownership:**

GFSL confirms that:

It/its associates have no financial interest or any other material conflict in relation to the subject Commodity futures covered herein at the time of publication of this report.

Further, the Research Analyst confirms that:

He, his associates and his relatives have no financial interest in the subject Commodity futures covered herein, and they have no other material conflict in the subject Commodity at the time of publication of this report.

**2. Disclosures regarding Compensation:**

During the past 12 months, GFSL or its Associates have not received any compensation or other benefits from any entity/ third party in connection with the Commodity futures mentioned in this report.

**3. Disclosure regarding the Research Analyst's connection with the Commodity futures:**

It is affirmed that we, Vinod T P, Hareesh V and Anu V Pai, employed as Research Analysts by GFSL and engaged in the preparation of this report have no substantial ownership or financial interest over any Commodity futures mentioned in the report.

**4. Disclosure regarding Market Making activity:**

Neither GFSL nor its Research Analysts have engaged in market making activities for the subject Commodity futures.

Copyright in this report vests exclusively with GFSL

Geojit Financial Services Ltd., 34/659-P, Civil Line Road, Padivattom, Kochi - 682024  
Toll-Free Number: 1800-425-5501 / 1800-103-5501, Paid Number: 91 - 484 - 2901000  
Research Entity SEBI Registration Number: INH200000345  
Email id: customercare@geojit.com, Web: www.geojit.com

**SEBI Stock Broker Registration No INZ000104737, Research Entity SEBI Reg No: INH200000345, Investment Adviser SEBI Reg No: INA200002817, Portfolio Manager: INP000003203, SEBI Registration No. Stock Broker: INZ000104737 / Depository Participant: IN-DP-325-2017, ARN Regn.Nos:0098, IRDA Corporate Agent (Composite) No.: CA0226.**