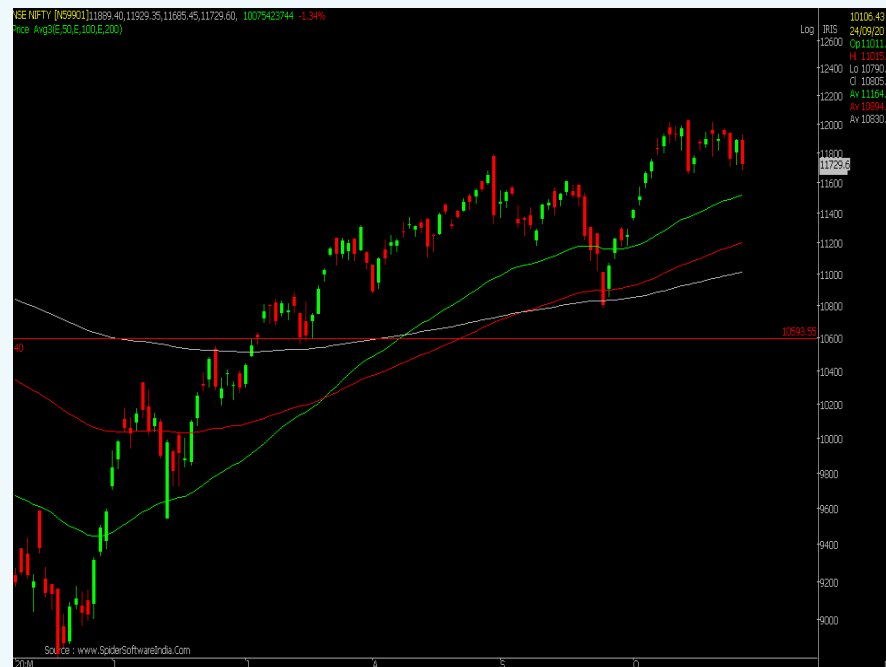


Nifty Outlook

Markets traded under pressure and lost over a percent. After the flat start, the benchmark gradually inched lower amid muted global sentiments due to the rising cases in US and Europe. Consequently, it ended 1.3% lower at 11,730 levels. The broader markets ended of a feeble note in range of 0.8-0.9%. Barring Telecom and Capital goods all the sectoral indices ended in the red wherein Banks, Metals and Realty were the top losers.

Rising Covid-19 cases globally specifically in Europe and US are worrying investors as strict lockdown could be imposed and economy recovery which is still at nascent stage could once again get hit. Further, no stimulus announcement as well as elections in US too are keeping investors on edge. The scheduled derivative expiry of October month contracts will further add to the volatility. We reiterate our cautious view on markets and suggest continuing with stock specific trading approach.



	VWAP (Expiry till date)	Max OI (Call)	Max OI (Put)
NIFTY	11880	12000	11500

News

- **Marico** reported Q2FY21 numbers wherein revenue was up 8.7% YoY at Rs 1,989 cr. Its net profit was up 7.9% YoY at Rs 273 cr.
- **Titan** posted 1.7% YoY decline in revenue to Rs 4,389 cr for Q2FY21. Its net profit was down by 37.8% YoY to Rs 199 cr.
- **Dr Reddy's** Q2FY21 revenue stood at Rs 4,896.7, up by 2% YoY. The company's PAT was down by 30% YoY at Rs 762 cr.

Religare Super Idea**

Scrip	Buy/Sell	CMP	Initiation Range	SL*	Target
ITC	SELL NOV FUTS	165.60	167.50-168.50	172	160

**Please note that the given technical and derivative recommendations are "valid for taking position" only on recommended date and in the given range.

*Please note - Stoploss is on closing basis for delivery recommendation and intraday basis for F/O recommendation.

Derivative Ideas **					
Instrument	B/S	Lot	INITIATION RANGE	SL	TARGET
ACC	BUY 1600 PE (NOV)	500	30-33	17	50

Sectors to watch	
Sector Name	Outlook
IT	BULLISH
BANKS	STABLE
FMCG	BULLISH

FII & DII Cash Segment (Rs. in Cr.)			
Category	Amt.	MTD	FYTD
FII**	3515	16960	33615
DII**	-1571	-17698	-29292

Trade Stats		
	NO OF CONTRACTS	TURNOVER IN CR
IDXFUTS	670986	48566
IDXOPT	36028151	11920
STKFUTS	1653470	122948

**Provisional data as on 27th Oct., 2020

Derivative Ideas

ACC NOV FUT added around 21% in open interest addition as short buildup was seen in it in till closing time. Current chart pattern also indicates further down move in its price. We suggest buying ACC 1600 PE as per below levels.

Strategy:- BUY ACC 1600 PE BETWEEN 30-33 STOPLOSS AT 17 TARGET 50.

Investment Pick - Exide Industries Ltd.

Scrip	CMP	Recommendation Price	Target	Duration
Exide Industries Ltd.	158.85	160	205	9-12 Months

- Exide Industries (Exide) is India's largest lead-acid storage battery manufacturer in India. It is the market leader in all automotive application in the domestic market. Its batteries portfolio spans across 2/3/4 wheelers, e-rickshaws, inverters, gensets and home UPS systems.
- The company's strengthening leadership position, constant focus on improving technology, product & service, debt-free status, expanding return ratios makes it one of our preferred picks in the sector. Hence, we recommend a Buy on the stock with a target price of Rs. 205 valuing the core business at 15x FY23E EPS and life insurance business at 1x FY20 Embedded Value.

CACT Calendar - October 2020 (Cash Dividend)

Sun	Mon	Tue	Wed	Thu	Fri	Sat
25	26	27	28	29	30	31
	<ul style="list-style-type: none"> L&T Technology Services Ltd Mindtree Ltd. Privi Speciality Chemicals Ltd Tower Infrastructure Trust V R Films & Studios Ltd 	<ul style="list-style-type: none"> Hindustan Zinc Ltd. Larsen & Toubro Infotech Ltd 	<ul style="list-style-type: none"> Asian Paints Ltd. Ccl Products (India) Ltd. Confidence Petroleum India Ltd. Foseco India Ltd. Gmm Pfaudler Ltd. Granules India Ltd. Hindustan Unilever Ltd. Sasken Technologies Ltd Vedanta Limited 	<ul style="list-style-type: none"> Colgate-Palmolive (India) Ltd. Nestle India Ltd. Tech Mahindra Ltd. 		

Result Calendar - October 2020

Mon	Tue	Wed	Thu	Fri	Sat
26 <ul style="list-style-type: none"> Alicon Castalloy Limited Amradeep Industries Ltd. Amraworld Agrico Ltd. Angel Broking Ltd Aym Syntex Ltd Bhartia Bachat Ltd Ester Industries Ltd. Finolex Industries Ltd. Gccl Infrastructure & Projects Ltd. Genus Paper & Boards Ltd Ghcl Ltd. 	27 <ul style="list-style-type: none"> 63 Moons Technologies Ltd Accelya Solutions India Ltd Acrow India Ltd. Amara Raja Batteries Ltd. Bharti Airtel Ltd. Castrol India Ltd. Ceat Ltd. Gujarat Poly Electronics Ltd Gujarat Intrux Ltd. Hindustan Fluorocarbons Ltd. Icici Prudential Life Insurance Company Ltd Jk Agri Genetics Ltd Jm Financial Ltd. Kirloskar Pneumatic Co.Ltd. K.P.R. Mill Limited Kriti Industries (India) Ltd. 	28 <ul style="list-style-type: none"> Apcotex Industries Ltd. Apl Apollo Tubes Ltd. Aptech Ltd. Au Small Finance Bank Ltd Axis Bank Ltd. Balaji Amines Ltd. Blue Star Ltd. Bright Brothers Ltd. Can Fin Homes Ltd. Carborundum Universal Ltd. Century Enka Ltd. Cg Power And Industrial Solutions Ltd Cummins India Ltd. Dr.Reddy'S Laboratories Ltd. Firstsource Solutions Ltd. Geetanjali Credit And Capital Ltd 	29 <ul style="list-style-type: none"> 3P Land Holdings Ltd Aavas Financiers Ltd Aegis Logistics Ltd. Andhra Paper Ltd Arvind Ltd. Astec Lifesciences Limited Bajaj Healthcare Ltd Banaras Beads Ltd. Bank Of Baroda Blue Dart Express Ltd. Bharat Petroleum Corporation Ltd. Canara Bank Chemfab Alkalis Ltd Cholamandalam Investment And Finance Company Ltd Coromandel Engineering 	30 <ul style="list-style-type: none"> Ador Multiproducts Ltd. Agri- Tech (India) Ltd Amj Land Holdings Ltd Arfin India Ltd Aro Granite Industries Ltd. Arvind Smartspaces Ltd Bls Infotech Ltd. Computer Point Ltd. Compucom Software Ltd. Contil India Ltd. Lt Foods Ltd. Deepak Nitrite Ltd. Dr. Agarwals Eye Hospital Ltd. Eimco Elecon (India) Ltd. Emkay Global Financial Services Ltd. 	31 <ul style="list-style-type: none"> Colinz Laboratories Ltd. Dcb Bank Limited Divyashakti Granites Ltd. Gujarat Lease Financing Ltd. Hindustan Bio Sciences Ltd. Icici Bank Ltd. Idfc First Bank Ltd Jsw Holdings Limited Mayur Floorings Ltd. Nitin Spinners Ltd. Paisalo Digital Ltd Punit Commercials Ltd.

For complete schedule of more Company Results Calendar [click here](#).

Economic Calendar - October 2020

Mon	Tue	Wed	Thu	Fri	Sat
26	27	28	29	30 <ul style="list-style-type: none"> Federal Fiscal Deficit (Sep) Infrastructure Output (YoY) (Sep) 	31 <ul style="list-style-type: none"> Federal Fiscal Deficit Balance of Payments (USD) Current Account (USD) Infrastructure Output (YoY) Trade Balance (USD)

CACT Calendar - October 2020 (Buy Back of Shares)

Sun	Mon	Tue	Wed	Thu	Fri	Sat
25	26	27	28 <ul style="list-style-type: none"> Kiocl Ltd 	29	30	31

Religare Investment Calls

Name of the Company	Reco Date	Current Rating*	Reco Price	Target Price	Upside %	CMP	Expected returns from CMP %
ITC	27-May-19	Buy	292	337	15.3%	166	103.6%
ELGI Equipments**	09-Aug-19	Buy	123	157	27.6%	106	48.2%
Cummins India	31-Jan-2020	Buy	585	705	20.5%	443	59.1%
Godrej Agrovet	13-Feb-2020	Buy	559	618	10.5%	524	18.0%
Voltas	14-Feb-2020	Buy	687	791	15.1%	703	12.5%
Larsen Toubro	08-Jun-2020	Buy	961	1,219	26.8%	983	24.0%
Colgate Palmolive	30-Jul-2020	Hold	1,448	1,646	13.7%	1,541	6.8%
Marico	03-Aug-2020	Buy	363	405	11.5%	363	11.6%
Castrol India	03-Aug-2020	Buy	115	151	31.3%	116	30.1%
Bharti Airtel	04-Aug-2020	Buy	547	709	29.6%	452	56.9%
Navneet Education	19-Aug-2020	Buy	79	89	12.3%	78	14.6%
INOX Leisure	20-Aug-2020	Buy	282	376	33.3%	263	43.0%
The Ramco Cements	21-Aug-2020	Hold	719	842	17.1%	771	9.2%
HDFC AMC	03-Sept-2020	Buy	2,428	2,993	23.3%	2,282	31.1%
Dabur India	14-Sept-2020	Buy	508	616	21.3%	517	19.1%
Godrej Consumer Products	16-Sept-2020	Buy	706	845	19.7%	677	24.8%
Mahindra and Mahindra	06-Oct-2020	Buy	607	775	27.7%	604	28.3%
Bata India	19-Oct-2020	Buy	1,373	1,669	21.6%	1,325	26.0%
Britannia Industries	22-Oct-2020	Buy	3,397	4,265	25.5%	3,542	20.4%
Exide Industries	27-Oct-2020	Buy	160	205	28.1%	159	29.1%

*Current rating is based on returns potential **Stock price adjusted as per Bonus declared (1:1)

Buy - Potential Returns >10% over 12 months

Hold - Potential Returns <10% over 12 months

For Religare Investment calls performance [click here](#)

Research Product Basket

- For every client, the advisor must allocate a specific proportion of funds for trading and investing depending on the risk taking ability and willingness of the client and their investment goals.
- The below mentioned product basket tries to address the way to deal with the trading portfolio (cash/derivative) for optimum effectiveness of research calls.
- It is recommended to divide your trading funds for various types of calls and not invest the entire amount for 1 or 2 calls only.

For cash market trading					For 1L margin*	
Call / Product	Call Frequency	No. of calls	Avg open call duration	% funds allocated	Total	Per Call
Intraday Calls	Intraday	2 - 3	< 1 day	25%	25,000	8,000
Live / RMD Calls	Daily	3 - 4	3 - 4 days	30%	30,000	4,000
Master Pick	Weekly	1	1 month	15%	15,000	5,000
Religare Alpha	Opportunity	NA	2 - 3 months	20%	20,000	As per weightage
Cash		NA		10%	10,000	
Intraday Calls	These calls are flashed live on Ms Lync and ODIN with the purpose of squaring off positions on the same day. As a policy, we restrict our intraday cash market calls to less than 4 calls a day. Hence, funds should be allocated accordingly to have provision to trade in all calls.					
Live / RMD Calls	2 super ideas are flashed in RMD daily with a view of 3-4 days. Additionally as per market opportunity, we flash live calls during the day (including BTST calls). 3-4 such calls are made on a daily basis which might be open for 3-4 days. Funds should be allocated keeping in mind that there will be 7-8 such open calls daily.					
Master Pick	This is our weekly recommendation shortlisted on the basis of techno-funda analysis. 15% of funds is recommended to be allocated for Master Pick considering that there will be 3 open calls. The average open duration for this call will be 1 month.					
Religare Alpha	This is a portfolio of 8-10 stocks which are held with a view of 2-3 months. It is recommended to allocate 20% of funds for building this portfolio which will provide stability to the overall trading portfolio.					
Cash	10% surplus cash in the portfolio should be kept for the purposes of allocating it to opportunities as and when they arrive.					

For derivative market trading					For 1L margin*	
Call / Product	Call Frequency	No. of calls	Avg open call duration	% funds allocated	Total	Per Call
Derivative Ideas	Daily	1 - 2	1 - 3 days	40%	40,000	40,000
Live calls	Intraday / Daily	1 - 2	3 - 4 days	50%	50,000	50,000
Cash		NA		10%	10,000	
Derivative Ideas	1 derivative idea is shared in RMD daily. It can be a plain vanilla F&O buy/sell call or an option strategy. Funds should be allocated assuming 2 such calls will be open at any time. These calls are open for 3-4 days on an average.					
Live Calls	These calls are flashed on MS Lync and ODIN during live market hours. These calls can be intraday or with a view of 2-3 days. Funds should be allocated considering 2 such calls will be open at any time. 3/4 times, these calls will be on Nifty / Bank Nifty only.					
Cash	It is recommended to hold 10% cash to capitalize on any opportunity that may arise in markets.					

Research Analysts

Ajit Mishra	ajit.mishra@religare.com
Himanshu Sharma	himanshu.sharma1@religare.com
Khadija Mantri	khadija.mantri@religare.com
Manoj M Vayalar	manoj.vayalar@religare.com
Nirvi Ashar	nirvi.ashar@religare.com
Rohit Khatri	rohit.khatri@religare.com
Suhanee Shome	suhanee.shome@religare.com

Before you use this research report , please ensure to go through the disclosure inter-alia as required under Securities and Exchange Board of India (Research Analysts) Regulations, 2014 and Research Disclaimer at the following link : <https://www.religareonline.com/disclaimer>

Specific analyst(s) specific disclosure(s) inter-alia as required under Securities and Exchange Board of India (Research Analysts) Regulations, 2014 is/are as under:

Statements on ownership and material conflicts of interest , compensation– Research Analyst (RA)

[Please note that only in case of multiple RAs, if in the event answers differ inter-se between the RAs, then RA specific answer with respect to questions under F (a) to F(j) below , are given separately]

S. No.	Statement	Answer	
		Yes	No
	I/we or any of my/our relative has any financial interest in the subject company? [If answer is yes, nature of Interest is given below this table]		No
	I/we or any of my/our relatives, have actual/beneficial ownership of one per cent. or more securities of the subject company, at the end of the month immediately preceding the date of publication of the research report or date of the public appearance?		No

	I/we or any of my/our relative, has any other material conflict of interest at the time of publication of the research report or at the time of public appearance?		No
	I/we have received any compensation from the subject company in the past twelve months?		No
	I/we have managed or co-managed public offering of securities for the subject company in the past twelve months?		No
	I/we have received any compensation for brokerage services from the subject company in the past twelve months?		No
	I/we have received any compensation for products or services other than brokerage services from the subject company in the past twelve months?		No

	I/we have received any compensation or other benefits from the subject company or third party in connection with the research report?		No
	I/we have served as an officer, director or employee of the subject company?		No
	I/we have been engaged in market making activity for the subject company?		No

Nature of Interest (if answer to F (a) above is Yes :

Name(s) with Signature(s) of RA(s).

[Please note that only in case of multiple RAs and if the answers differ inter-se between the RAs, then RA specific answer with respect to questions under F (a) to F(j) above , are given below]

SS.No.	Name(s) of RA.	Signatures of RA	Serial Question of question which the signing RA needs to make a separate declaration / answer	Yes	No.

Copyright in this document vests exclusively with RBL. This information should not be reproduced or redistributed or passed on directly or indirectly in any form to any other person or published, copied, in whole or in part, for any purpose, without prior written permission from RBL. We do not guarantee the integrity of any emails or attached files and are not responsible for any changes made to them by any other person.

No representations are being made about the performance or activities unless accompanied by data regarding performance, disclosures of all the risk factors, etc. and disclaimer that "Such representations are not indicative of future results"